

THE LONDON MATHEMATICAL SOCIETY NEWSLETTER

No. 282

May 2000

FORTHCOMING SOCIETY MEETINGS

Friday 19 May-Saturday 20 May 2000 - Oxford

Hilbert's Problems: Past and Future

Joint meeting with the

British Society for the History of Mathematics

Friday 23 June 2000 - London

M. Buhmann, M.J.D. Powell

COUNCIL DIARY 17 March 2000

As usual, a large part of this month's Council was spent on the President's business, which seems to grow with each successive meeting. Negotiations with EPSRC are one of the many calls on the President's time, and we heard more about two current issues (both reported in an earlier diary). Steady progress is being made on an EPSRC initiative to promote 'research connectivity' between the mathematics and engineering communities. Both our President and his opposite number in the IMA are actively involved in these developments. We also had a further report on discussions over the 'flexible funding' proposals for doctoral training. This will go out to the community for consultation in the near future.

We received a long and interesting report from Ken Brown, who had represented the Society at the 5th Pan-African Congress of Mathematicians in Cape Town in January. He highlighted some of the difficulties facing mathematics in modern-day Africa. The main problem is the endemic lack of money, exacerbated by difficulties stemming from the politics of the region. Council is keen to support mathematics in Africa and to strengthen links with the African Mathematical Union, and proposals will be brought to a future Council meeting. One idea which

has been floated is to support summer schools in Africa for local PhD students and young faculty, with lecturers from Europe.

Readers will know that the LMS provides some funding to the Isaac Newton Institute, and recently we held discussions with Institute management on a scheme for 'satellite' INI meetings, to be held at institutions outside Cambridge to bring the benefits of the Institute's programmes to a wider audience. Council agreed that it should make funding arrangements to encourage leaders of INI programmes to organise such meetings (for some of which the Institute will seek EPSRC funding). One such meeting has already been planned to take place in Warwick later this year.

We considered a detailed paper prepared by John Pym, Council and General Secretary, on the changes in By-Laws needed to put recent changes to electoral procedure and Council structure on a firm footing. One issue discussed was whether Council members need be required to be UK residents. The final proposals (which go to the Annual General Meeting in June for approval) are included with this *Newsletter*.

Tony Scholl

MODEL THEORY AND SET THEORY

There will be a one-day meeting on Model Theory and Set Theory on Thursday 18 May at the London Mathematical Society, De Morgan House, 57-58 Russell Square, London WC1, as part of the series "Set Theory and its Neighbours". The meeting will start at 11 am with the first talk at 11.30 am. The speakers will include: Andrey Bovykin (Birmingham), Gabriela Campero-Arena (Leeds), Zoe Chatzidakis (Paris VII), Imre Leader (UCL), Hugh Woodin (Berkeley).

Further information is available from Charles Morgan (charles.morgan@ucl.ac.uk) or via the web (<http://www.ucl.ac.uk/~ucahcjm/stn.html>). It is planned to keep the meetings fairly relaxed, allowing plenty of opportunity for informal discussion. All are welcome and encouraged to participate. The organisers are grateful to the LMS for allowing them to use De Morgan House as a venue and for their financial support for the meeting.

DAVID G. CRIGHTON

It is with very great sadness that we report that Professor David G. Crighton FRS, died on 12 April 2000, aged 57, after a long and most courageous struggle against cancer. David was elected a member of the London Mathematical Society on 20 May 1988; he served on Council as a Member-at-Large for the period 1988 to 1994; he then became a Vice-President of the Society for the following year. We had all looked forward, with great anticipation, to his being our next President. With his gentle sense of humour and personal warmth, with his clear vision for the future, and with his tremendous appetite for work, he always commanded a natural authority and respect on Council. We sympathise with his family at this time. We too will miss him greatly, and we feel ourselves deprived of an outstanding mathematician and a great leader.

M.J. Taylor
President

LONDON MATHEMATICAL SOCIETY

Notice of a General Meeting

A General Meeting of the Society will be held on 23 June 2000 at 5.00 pm in the Chemistry Lecture Theatre, University College London. There will be two items for consideration.

1. **Revision of the By-Laws.** The meeting will consider a proposal by the Council of the Society to replace the existing By-Laws by a complete set of revised By-Laws. A copy of the proposed By-Laws is enclosed with this *Newsletter*.
2. **Appointment of Scrutineers.** The Council of the Society asks the meeting to appoint Scrutineers for the year 2000 elections to Council and to Nominating Committee.

John Pym
Council and General Secretary

LONDON MATHEMATICAL SOCIETY BRITISH SOCIETY FOR THE HISTORY OF MATHEMATICS

JOINT TWO-DAY MEETING

HILBERT'S PROBLEMS: PAST AND FUTURE

Friday 19 - Saturday 20 May 2000
Mathematical Institute, Oxford

Friday

- 2.30 - 3.30 Jeremy Gray (Open) *Hilbert, Göttingen, and the Reputation of the Problems*
3.30 - 4.00 Tea
4.00 - 5.00 David Rowe (Mainz) *Geometry, Axiomatisation and Foundations (The first 6 problems)*
5.15 - 6.15 Hugh Woodin (Berkeley) *The Continuum Hypothesis*

Saturday

- 9.15 - 10.15 Simon Donaldson FRS (Imperial College, London) *Geometry*
10.15 - 10.45 Coffee
10.45 - 11.45 Norbert Schappacher (Strasbourg) *Hilbert on Number Theory and Modern Algebra*
12.00 - 1.00 Don Zagier (Bonn) *Number Theory*
1.00 - 2.00 Buffet lunch
2.00 - 3.00 Craig Fraser (Toronto) *Hilbert and Analysis (Problems 19 to 23)*
3.00 - 3.30 Tea
3.30 - 4.30 John Ball FRS (Oxford) *Analysis (Calculus of Variations)*
-

Organisers: Jeremy Gray (j.j.gray@open.ac.uk) and
Peter Neumann (peter.neumann@queens.oxford.ac.uk)

A reception and dinner will be held at St Cross College on the Friday evening at 7.00 pm for 7.30 pm. The cost of the dinner is £25.00 per person, inclusive of wine. Those wishing to attend should inform Susan Oakes, London Mathematical Society, De Morgan House, 57-58 Russell Square, London WC1B 4HP, enclosing a cheque payable to "The London Mathematical Society". Those wishing to book accommodation should contact Susan Oakes (oakes@lms.ac.uk).

Some funds are available to contribute in part to the expenses of members of the London Mathematical Society or research students who wish to attend the meeting. Requests for support should be addressed to the Meetings & Membership Secretary, London Mathematical Society, De Morgan House, 57-58 Russell Square, London WC1B 4HP (requests should include an estimate of expenses and a very brief *curriculum vitae*; research students should include brief letters of endorsement from their supervisors).

QUANTUM PROBABILITIES AND PARADOXES OF THE QUANTUM CENTURY

A two-day meeting entitled "Quantum Probabilities and Paradoxes of the Quantum Century" will take place at the School of Mathematical Sciences, University of Nottingham on 3-4 May, celebrating the 100th anniversary of the discovery of quanta by Max Planck, and the 60th birthday of Robin Hudson, one of the founders of quantum probability. Speakers include Luigi Accardi (Roma II), Brian Davies (KCL), David Elworthy (Warwick), Robin Hudson (Nottingham Trent), John T. Lewis (DIAS), Nobuaki Obata (Nagoya), Ray Streater (KCL), Aubrey Truman (Swansea) and Graham Vincent-Smith (Oxford). The organisers are happy to acknowledge financial support from the LMS and the Institute of Physics. Further information can be obtained from Professor Viacheslav Belavkin (vpb@maths.nott.ac.uk) and

Stephen Wills (sjw@maths.nott.ac.uk), or visit the web site (http://www.maths.nottingham.ac.uk/personal/vpb/vpb_qpdays.html).

NORTH BRITISH FUNCTIONAL ANALYSIS SEMINAR

A meeting of the North British Functional Analysis Seminar will be held at the David Hume Tower, University of Edinburgh, from 2.30 pm on Monday 29 May until 12.00 noon on Tuesday 30 May 2000. The speakers will be Professor Gennadi Kasparov (Institut de Mathematique de Luminy, Marseille) and Professor Jim Agler (University of California at San Diego). The meeting has financial support from the London Mathematical Society. For further information contact Dr Zinaida Lykova, Newcastle University (Z.A.Lykova@ncl.ac.uk).

Department of Mathematics National University of Ireland

Junior Lectureships (2) in Mathematics

Applications are invited for the above full-time permanent posts.

At present the Department runs full degree programmes in the Arts and Science Faculties and is a major contributor to the denominated degree in Computing/Mathematical Science. A degree programme in Financial Mathematics and Economics began in September 1998. Service courses in Mathematics are additionally given in the Engineering, Commerce and Medical Faculties. There are also active and on-going Masters' and PhD programmes.

One vacancy arises as a result of an increase in the number of students in the Financial Mathematics programme and the appointee will have specialism in Financial Mathematics. The other post will require specialization in Mathematical and/or Statistical Computer Packages and Applications.

The department home page is <http://www.maths.nuigalway.ie>. For informal information contact Professor Ted Hurley (tel: +353-91-750442; fax: +353-91-750542; e-mail: ted.hurley@nuigalway.ie). Further information may be obtained from The Personnel Office, National University of Ireland, Galway (tel: +353-91-750360; fax: +353-91-750523; e-mail: personnel@mis.nuigalway.ie).

Closing date for completed applications is **5th May 2000**.

National University of Ireland, Galway is an equal opportunities employer.



Institute of **Physics** PUBLISHING

Nonlinearity Meeting

supported by
London Mathematical Society and Institute of Physics

Half-day Meeting at University College, London
Sunday 14 May 2000

Programme:

- 1.00 - 1.05 **Opening (P Constantin and P Cvitanovic, Joint Editors of Nonlinearity)**
- 1.05 - 1.45 **A Chenciner** (Institut de Mécanique, Paris) *A new type of periodic solution of the n -body problem in the case of equal masses*
- 1.50 - 2.35 **T Prosen** (University of Ljubljana) *Ergodic properties of a certain class of interacting spin chains*
- 2.40 - 3.25 **D Bensimon** (Laboratoire de Physique Statistique, Paris) *Elastic properties of a single DNA molecule*
- 3.25 - 3.55 Tea
- 4.00 - 4.45 **L Bunimovich** (Georgia Institute of Technology) *Walks in rigid environments*
- 4.55 - 5.40 **T Tél** (Eötvös University, Budapest) (unconfirmed) *TBA*

Location: The meeting will be held in the Gustav Tuck Lecture Theatre, University College London. Through the Main Entrance of UCL, turn right to the South Cloister. The lecture theatre is situated on the second floor of the South Cloister.

The meeting is open and there is no registration charge; but all those interested in attending should first contact Lara Birong (publications@lms.ac.uk).

THIRD EUROPEAN CONGRESS OF MATHEMATICS, LMS Meeting & Reception

The London Mathematical Society will be holding a Meeting and Reception, for its members, during the 3rd European Congress of Mathematics at 6.30 pm on Thursday 13 July. Members who wish to attend should apply for their free ticket to the Administrator, London Mathematical Society, De Morgan House, 57-58 Russell Square, London WC1B 4HP (e-mail: lms@lms.ac.uk) no later than 30 June. The Society hopes to entertain as many as possible of its members who are attending the European Congress, but numbers are limited.

FIFTH EUROPEAN CONGRESS OF MATHEMATICS

The Third European Congress of Mathematics will be held in Barcelona in July this year, and the location for the Fourth Congress (in 2004) will be decided at that time. It is not too early to start thinking about the Fifth Congress in 2008. The London Mathematical Society would be interested to learn of any Department that might wish to consider making a bid to host the Congress. The basic requirements are a University with the facilities for hosting a large Congress (some 1500 to 1800 participants), an attractive location, and a willingness to undertake the substantial organisational work required. If you are interested, would you please consult either Professor E.C. Lance, Department of Pure Mathematics, University of Leeds (e-mail: e.c.lance@leeds.ac.uk) or Professor P.T. Saunders, Department of Mathematics, King's College London (e-mail: peter.saunders@kcl.ac.uk), who will attend the European Mathematical Society Council meeting in July as London Mathematical Society representatives, and inform Dr D.J.H. Garling, Executive Secretary, London Mathematical Society (e-mail: garling@lms.ac.uk).

MEMBERSHIP DRIVE

The purpose of the London Mathematical Society is to promote Mathematics, and to succeed in its purpose it needs a strong and vigorous membership. There are some 3000 mathematicians listed in the "Mathematical Who's Where, United Kingdom" and a majority of them are Members of the Society. The Council of the Society is holding a membership drive this year and is inviting those mathematicians who have not already joined to become Members of the Society.

These mathematicians will have received the *Newsletter* this year, (and will continue doing so until July), and will have learnt that the Society is active in all areas of mathematics, pure and applied, and that it is indeed promoting mathematics effectively.

If you would like to become a Member, an application form is enclosed. Applications for membership are considered by Council and then approved at a Society Meeting. If your application for membership reaches De Morgan House by Tuesday 9 May, it will then be considered by Council, and you will become a Member at the joint meeting with the British Society for the History of Mathematics in Oxford on Friday 19 May.

If you are already a Member, why not encourage your friends and colleagues, who are not Members, to join!

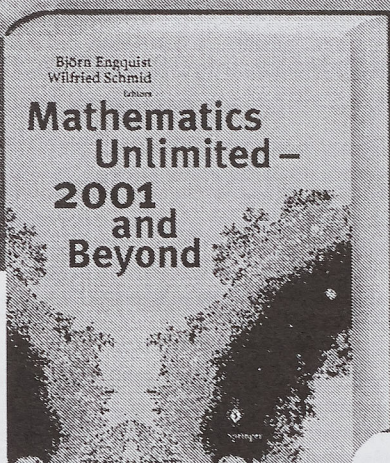
JEFFREY D. WESTON

Professor Jeffrey D. Weston, who was elected a member of the London Mathematical Society on 15 June 1944, died on 10 March, aged 80.

GEORGE K. BATCHELOR

Professor George K. Batchelor FRS, head of DAMTP Cambridge from 1959-1984, died on 30 March, aged 80.

The Mathematics Book of the Century



B. Engquist, W. Schmid (Eds.)

Mathematics Unlimited - 2001 and Beyond

2000. Approx. 800 pp. 120 figs., 40 in color.
Hardcover *DM 79; £ 27; FF 298; Lit. 87.250
ISBN 3-540-66913-2

Due Fall 2000

*For further information and some abstracts of this
book please visit us at:*

<http://www.springer.de/math/wmy2000/2000book/>

Please order from
Springer · Customer Service
Haberstr. 7 · 69126 Heidelberg, Germany
Tel: +49 6221 345200
Fax: +49 6221 300186
e-mail: orders@springer.de
or through your bookseller

This is a book guaranteed to delight the reader. This veritable treasure trove not only depicts the state of mathematics at the end of the century, but is also full of remarkable insights into its future development as we enter a new millennium. True to its title, the book extends beyond the spectrum of mathematics, both pure and applied, to include contributions from other related sciences. Whatever your field of expertise, you will enjoy reading the many stimulating contributions and, in so doing, gain insights into the astounding progress of mathematics and the perspectives for its future over the next 100 years.

Unique in both form and content, this is a "must-read" for every mathematician and scientist and, in particular, for graduates still choosing their specialty.



Springer

* Recommended retail prices. Prices and other details are subject to change without notice.
In EU countries the local VAT is effective. d&g · 6677/MNT/SF

MSc in Financial Mathematics

at King's College London

KING'S
College
LONDON
Founded 1829

King's College is a multi-faculty institution with over 16,000 students. The Mathematics Department has an international reputation for teaching and research and was rated 5 in the last RAE for both pure and applied mathematics. As a new initiative, a new group in Financial Mathematics has been established with the appointment of Professor Lane P. Hughston, and two further staff, Dr. Giulia Iori and Dr. Mihail Zervos.

Financial Mathematics is a flourishing area of modern science. Since the pioneering days of Black, Scholes and Merton, the subject has developed into a substantial body of knowledge and its numerous applications have become vital to the functioning of the world's financial institutions. As a consequence, a solid command of the principles and techniques of quantitative finance is essential for a responsible approach to trading, asset management and risk control of complicated financial positions.

The Financial Mathematics MSc at King's College London covers a full range of topics in mathematical finance and its applications. The curriculum includes: derivatives pricing and hedging, asset price dynamics, risk analysis and extreme events, interest rates and foreign exchange processes, credit and inflation linked products, real options, energy derivatives, investment decision making and stochastic optimisation and control. The programme builds on the Financial Mathematics group's close links with the financial institutions in the City.

The MSc is based on lecture courses and a project and requires two years of part-time study or one year of full-time study. The first intake for the part-time course will be in September 2000 and the full-time course will start in September 2001. The programme is compatible with the needs of those already employed in the financial sector. Candidates choose eight lecture courses in consultation with their course advisor. The present programme includes the following core courses and options:

Applied Probability and Stochastics
Introduction to Derivatives Pricing
Financial Markets
Stochastic Analysis
Advanced Statistics
Numerical Methods for Differential Equations
Interest Rate and Foreign Exchange Dynamics
Exotic Derivatives
Portfolio Risk Management

Further course options are available to suit specialised interests, such as Neural Networks, Operational Research, Linear Systems and Control Theory, Non-Linear Dynamics, Measure Theory, Operator Theory, Statistical Dynamics and Spectral Theory of Markov Chains. Additionally, each candidate undertakes a project in June, July and August which involves a substantial report. This can be carried out in King's or in a financial or academic institution outside.

For further information consult
<http://www.mth.kcl.ac.uk/> or
<http://www.mth.kcl.ac.uk/research/finmath/>

Applications are invited for the part-time programme starting September 2000. The fees for this programme are £4,200 per year. The entry requirement for the MSc is a first or second class degree in Mathematics, Physics, Computing, Engineering or other suitable mathematical discipline. Application forms are available from:

The Postgraduate Secretary,
Department of Mathematics, King's
College, Strand, London WC2R 2LS.
E-mail: pg.maths@kcl.ac.uk
Tel: +44 (0)20 7848 2107
Fax: +44 (0)20 7848 2017

LMS INVITED LECTURES SERIES

The Society's Invited Lectures series consists of meetings at which a single speaker gives a course of about ten expository lectures, examining some subject in depth, over a five day period (Monday to Friday) during a University vacation. The meetings are residential and open to all interested. It is intended that the texts of the lectures given in the series shall be published. In addition to full expenses, the lecturer is offered a fee of £1250 for giving the course and a further fee of £1500 on delivery of the text in a form suitable for publication. Recent lecturers in the series have been P.F. Baum (1995), F.J. Almgren (1996), J. Alperin (1997), D. Zagier (1998), A. Mielke (1999). The 2000 lectures were given at the Mathematical Institute, Oxford by B. Dubrovin.

For the 2001 meeting, proposals are now invited from any member who, in addition to suggesting a topic and lecturer, would be prepared to organize the meeting at the member's own institution or a suitable conference centre. Enquiries about this series should be directed to the Executive Secretary, Dr D.J.H. Garling, London Mathematical Society, De Morgan House, 57-58 Russell Square, London WC1B 4HP (e-mail: garling@lms.ac.uk, tel: 020 7637 3686, fax: 020 7323 3655) to whom proposals should be sent no later than **Wednesday 14 June 2000**.

RECORDS OF PROCEEDINGS AT MEETINGS

ORDINARY MEETING

held on *Saturday 4 March 2000* at the Isaac Newton Institute, Cambridge, Professor M.J. TAYLOR, FRS, President, in the Chair. There were present about 45 members and visitors.

Forty people were elected to Ordinary Membership: I.D. Abrahams, Y.A. Antipov, C.N. Baesens, A. Balinsky, P.P. Boalch, M. Broom, M. Bruni, P. Busch, P.S. Calay, W.A. Cox, R.V. Craster, W.D. Crowe, M. Csörnyei, R.M.H. De Jeu, C.W. Eaton, M.L. Einsiedler, M.H. Escardo, X-C. Fu, C. Good, D.I. Graham, D.J. Higham, N.A. Hill, C.J. Hunter, T. Ioannidou, J.A. Johnson, G. Jones, J.S.W. Lamb, R. Maartens, M.P. McIver, A.B. Ol de Daalhuis, V. Pidstrygach, A.J.M. Spencer, S.K. Stanczyk, G. Tanner, L.N. Trefethen, S.J. Vickers, I.M. Wanless, S.K. Wilson, E. Winstanley, A.N. Yannacopoulos; three people were elected to Associate Membership: H.K. Hauer, N.C. Mavron, P. Viste; and four people were elected to Reciprocity Membership: A.A. Akinsete (Nigerian Math. Soc.), K.P. Deckelnick (Deutsche Math.-Verein.), B. Jacob (Deutsche Math.-Verein.), P.C.L. Stephenson (Austral. Math. Soc.). Three members signed the book and were admitted to the Society.

A lecture was given by Professor W.K. Hayman, FRS, 'Recollections of Miss Cartwright'. After tea, the Inaugural Mary Cartwright Lecture was given by Professor C.M. Series 'Exploring the space of Quasifuchsian groups'. In the evening, a dinner was held at Girton College.

REGULAR AND CHAOTIC DYNAMICS

The London Mathematical Society and Turpion are jointly involved in publishing three Russian journals in translation. In addition Turpion publishes 'Regular and Chaotic Dynamics'. It now offers free access to this. You do not need to be a subscriber to the journal to register for online access to the full text of all articles, including volumes going back to 1998. The online registration forms for institutions and individuals are available from the world wide web (http://www.turpion.com/rform_rcd.html). Please share this information with librarians, researchers, users, journal directories, and others interested.

Regular and Chaotic Dynamics is a quarterly peer-reviewed international scientific journal published in English. The jour-

nal was founded in 1996 by the Moscow State University, Moscow Centre for Continuous Mathematical Education, and Udmurt State University. Then in 1999 the Department of Mathematics of the Russian Academy of Sciences became a cofounder of the journal. Starting from the first issue of 2000 the journal is published jointly by Turpion Ltd, and the Department of Mathematics of the Russian Academy of Sciences. The journal publishes only original research results in the analysis of regular and stochastic behaviour in determined dynamic systems that arise in classical mechanics, physics and other areas. Visit the site www.turpion.com to obtain more information about the journal.

THE UNIVERSITY OF THE WEST INDIES

MONA, KINGSTON, JAMAICA

Professor in Applied Mathematics

Department of Mathematics and Computer Science



The Department of Mathematics and Computer Science of the University of the West Indies, Mona Campus is inviting applications for the post of Professor in Applied Mathematics. The successful candidate is expected to contribute to undergraduate and postgraduate teaching, research and the administration of the Department.

Candidates should have wide research experience and interests, a range of contacts in the research community, the capability to lead a research group, evidence of excellent teaching abilities, and the ability to work collaboratively. Preference will be given to candidates with a background in Financial Mathematics or Statistics.

Send detailed curriculum vitae with publication record and the names of three referees to: **The Assistant Registrar (Staff), Office of Administration, The University of the West Indies, Mona, Kingston 7, Jamaica, West Indies**, fax: [1 876] 977 1422 or email: pyoung@uwimona.edu.jm. In order to expedite the appointment procedure, please ask referees to send confidential reports directly to the University without waiting to be contacted.

Additional information can be requested from the Head of Department, Dr John Lodenquai at email: jlodenquai@cwjamaica.com and for further particulars, visit the web page: www.uwicentre.edu.jm.

The closing date for receipt of applications is **26 May 2000**, and the successful candidate is expected to take up duties by September 2000 or as close as possible to that date.



UNIVERSITY
OF BRISTOL

Professor of Applied Mathematics

Applications are invited for this post in the School of Mathematics from persons of outstanding research achievement in any area of applied mathematics or mathematical physics, including scientific computation and numerical analysis. This post is related to the retirement of Professor Philip Drazin. Preference may be given to active researchers who would strengthen and broaden existing areas of research within the School's Applied Mathematics and Numerical Analysis Group, or in the Department of Engineering Mathematics.

Informal enquiries are welcome, and may be made to the Head of School: Dr WGC Boyd, E-Mail W.Boyd@bris.ac.uk telephone + 44 (0) 117 928 7974.

For further details telephone (0117) 954 6947, minicom (0117) 928 8894 or E-Mail Recruitment@bris.ac.uk (stating postal address **ONLY**) quoting reference 6334.

The closing date for applications is 2nd June 2000.

www.bristol.ac.uk

AN EQUAL OPPORTUNITIES EMPLOYER

PARTIAL DIFFERENTIAL EQUATIONS

LMS/EPSRC Short Course

University of Bath, 4 - 8 September 2000

Organisers: G.R. Burton, G.C. Smith

In the modern theory of partial differential equations, where even the notion of "solution" has many interpretations, analytical precision is of central importance. This introductory course on rigorous PDE theory covers both the foundations in potential theory and harmonic analysis, and particular examples in linear and nonlinear analysis, to furnish background valuable to students of analysis, numerical analysis or continuum mechanics.

The core of the meeting will be three series of lectures accessible to beginning research students, but of benefit to the wider research community.

- **Nonlinear hyperbolic equations**
C.M. Dafermos (Brown University, Providence)
- **The Newtonian potential and nonlinear Poisson equations**
L.E. Fraenkel FRS (University of Bath)
- **Distributions, Fourier transforms and microlocal analysis**
Yu. Safarov (King's College London)

The registration fee is £60 which, for UK-based research students, includes the cost of course accommodation and meals. Participants must pay their own travel costs. EPSRC-supported students can expect that their registration fees and travel costs will be met by their departments from the EPSRC Research Training and Support Grant that is paid to universities with each studentship award.

Application forms may be obtained from: Helen Woodward, London Mathematical Society, De Morgan House, 57-58 Russell Square, London WC1B 4HP (e-mail: woodward@lms.ac.uk).

Numbers will be limited and those interested are advised to make an early application. The closing date for applications will be **23 June 2000**.

MATHEMATICAL BIOLOGY

LMS/EPSRC Short Course

Nottingham, 4 - 8 September 2000

Organiser: H.M. Byrne

Mathematical Biology is an exciting and rapidly expanding field of mathematics in which mathematical theory is used to provide insight into the physical mechanisms underlying complex biological processes such as solid tumour growth, the spread of epidemics and blood flow. As new biological problems are addressed, they, in turn, generate novel mathematical problems whose solution requires the development of new techniques.

The meeting will be aimed at graduate students interested in using mathematical techniques to investigate biological problems. The core of the meeting will be the following three series of lectures which will furnish participants with state of the art knowledge of key areas of mathematical biology.

- **Biological Fluid Dynamics**
Dr Matthias Heil (University of Manchester)
- **Spatial Modelling in Ecology**
Dr Jane White (University of Bath)
- **Stochastic Modelling**
Dr Philip O'Neill (University of Nottingham)

The lectures will be accessible to first year research students and of benefit to all participants. They will be supplemented by tutorials and discussion.

The registration fee is £60 which, for UK-based research students, includes the cost of course accommodation and meals. Participants must pay their own travel costs. EPSRC-supported students can expect that their registration fees and travel costs will be met by their departments from the EPSRC Research Training and Support Grant that is paid to universities with each studentship award.

Application forms may be obtained from: Helen Woodward, London Mathematical Society, De Morgan House, 57-58 Russell Square, London WC1B 4HP (e-mail: woodward@lms.ac.uk).

Numbers will be limited and those interested are advised to make an early application. The closing date for applications will be **23 June 2000**.

SET THEORY AND ANALYSIS

LMS/EPSRC Short Course

University of Leeds, 11 -16 September 2000

Organiser: J.K. Truss

Originating in the work of Cantor over 100 years ago, set theory has blossomed during the twentieth century. The most famous results have been Gödel's and Cohen's classic solution of Cantor's continuum problem (using constructible sets and forcing respectively) followed by more recent work on iterated forcing, cardinal arithmetic, determinacy and large cardinal axioms. Particularly striking has been the impact on certain parts of analysis.

The meeting is aimed at research students working in logic, analysis and allied areas, and all those postgraduate students who want to broaden their knowledge of modern developments in mathematics. It will introduce them to some of the main ideas of contemporary set theory, and help them to understand the impact of these on certain parts of analysis (and vice versa). Three main lecture series will be supplemented by two lectures on a more specialized application to analysis.

- **Background set theory and the real numbers as an ordered set**
Professor John K. Truss (University of Leeds)
- **Combinatorial functional analysis**
Dr Charles Morgan (University of East Anglia)
- **Forcing, large cardinals and their connections with analysis**
Dr Mirna Dzamonja (University of East Anglia)
- **Two lectures on superreal numbers**
Professor H. Garth Dales (University of Leeds)

Lectures will be supplemented by tutorials and discussion.

The registration fee is £60 which, for UK-based research students, includes the cost of course accommodation and meals. Participants must pay their own travel costs. EPSRC-supported students can expect that their registration fees and travel costs will be met by their departments from the EPSRC Research Training and Support Grant that is paid to universities with each studentship award.

Application forms may be obtained from: Helen Woodward, London Mathematical Society, De Morgan House, 57-58 Russell Square, London WC1B 4HP (e-mail: woodward@lms.ac.uk).

Numbers will be limited and those interested are advised to make an early application. The closing date for applications will be **23 June 2000**.

THE UNIVERSITY OF READING Department of Mathematics Two Lectureships in Mathematics

Applications are invited for the following lectureships in the Department of Mathematics from October 1 2000 or such other date as may be agreed.

A permanent lectureship in Applied Mathematics. The successful candidate will have a strong research record and preference may be given to a candidate with a research interest in fluid mechanics, computational fluid dynamics, reaction-diffusion theory or applied analysis, with applications in meteorology. Please quote Reference AC0040.

A fixed-term four year lectureship in Pure Mathematics. The successful candidate will have a strong research record and preference may be given to a candidate with a research interest in algebra, functional analysis or combinatorics. Please quote Reference AC0041.

Both appointments will be for a probationary period of three years in the first instance and the salaries are expected to be in the range Grade A £17,238 - £22,579 per annum. The positions include USS benefits.

Informal enquiries may be made to Dr David Porter (tel: 0118 931 8998, fax: 0118 931 3423, e-mail: d.porter@reading.ac.uk). Further particulars and application form are available from the Personnel Office, The University of Reading, Whiteknights, PO Box 217, Reading RG6 6AH (tel: (0118) 9316771 (answerphone), e-mail: Personnel@reading.ac.uk) giving full name and address. Closing date for applications for both posts **26 May 2000**. Please quote appropriate reference number.

UNIVERSITY OF CANTERBURY

*The University has a policy of equality of
opportunity in employment.*

Chair in Statistics

Applications are invited for a Professorial Chair in Statistics in the Department of Mathematics and Statistics. This Chair will complement the two existing Chairs in the Department (in Pure and Applied Mathematics). Applicants may be from any field of applied or theoretical statistics. The University is seeking a scholar with significant achievements and initiatives in both research and teaching. Administrative experience and the ability to attract research/consultancy funding are highly desirable. The appointee will have strong leadership qualities and experience in the supervision of doctoral students.

Full details are available from: h.reeves@regy.canterbury.ac.nz
and <http://www.canterbury.ac.nz/campusinfo/vacancies>.

Applications, quoting **Vacancy No. MT110**,
close on **16 June 2000** with:

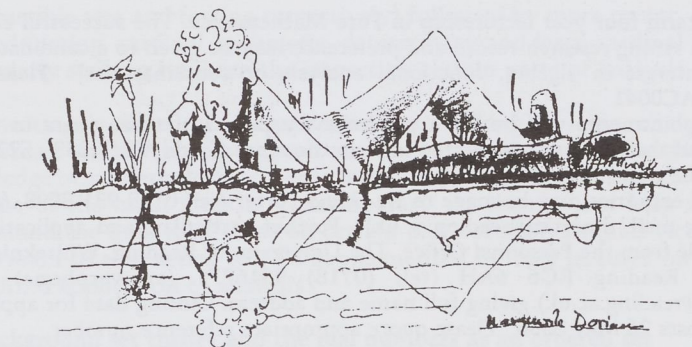
The Human Resources Manager (MT110)
University of Canterbury
Private Bag 4800
Christchurch
New Zealand



The Education of a Mathematician

Philip J. Davis

Hardcover, ca. \$25.00; ca. 250 pp. ISBN 1-56881-116-0



Life, Liberty, and the Pursuit of Mathematics

An excerpt from The Education of a Mathematician

I must have been born with skeptical and satirical genes, if there are such, and I was aware of it early. Regarding skepticism, the precept "question everything" looks good on a bumper sticker, but if one adhered to it rigorously, one couldn't get on with one's life. Part of the mathematizations installed today consists of rating things on scales. "On a scale of one to ten, where do you stand on the issue of race?"; "On a scale of one to ten, how much do you like Norwich Terriers as opposed to Airedales?" I question such ratings. Yet if someone were to ask me "On a scale of one to ten, how skeptical do you consider yourself, rating Pyrrho of Elis as ten?" I would answer "Six."

TO ORDER:

Plymbridge Distributors Limited
Estover Road, Plymouth PL6 7PZ
United Kingdom

Telephone: +44-1752-202301

Fax: +44-1752-202331

email: cservs@plymbridge.com



OR CONTACT:

A K Peters, Ltd.
63 South Ave, Natick, MA 01760
USA

Tel: 508-655-9933 Fax: 508-655-5847

email: service@akpeters.com

www.akpeters.com

NONCOMMUTATIVITY GEOMETRY AND PROBABILITY

An international conference on Noncommutativity - Geometry and Probability will be held from 10 - 14 July 2000 at the Department of Mathematics, Nottingham Trent University. This is an official satellite meeting of the XIII International Congress of Mathematical Physics (17 - 22 July Imperial College London) and will explore the theme of "noncommutativity" in mathematics and mathematical physics particularly through the emerging fields of noncommutative geometry and quantum probability. Prospective speakers include L. Accardi (Rome), S. Albeverio (Bonn), P. Biane (Paris), M. Bozejko (Wroclaw), E. Carlen (Georgia Tech), A. Connes (IHES), J. Cuntz (Heidelberg), L. Gross (Cornell), A. Jaffe (Harvard), D. Kreimer (Mainz), H. Moscovici (Harvard), K.R. Parthasarathy (New Delhi), K.B. Sinha (New Delhi) and D. Voiculescu (Berkeley).

Those wishing to participate should contact Alison Wilde (e-mail: alison.wilde@ntu.ac.uk, direct line: 0115 848 2976, fax: 0115 848 6536) for details of registration and accommodation. Further details are posted on the web (<http://science.ntu.ac.uk/msor/conf/2000/>). The meeting is funded by LMS and EPSRC. These funds include special provision for UK registered PhD students who should direct their applications through Alison Wilde, as above.

THE MAN WHO LOVED ONLY NUMBERS

A public lecture will be given by Paul Hoffman on "The Man Who Loved Only Numbers" on Wednesday 10 May at 18.00 at The Royal Society, 6 Carlton House Terrace, London SW1. Paul Hoffman won the 1999 Aventis Prize for Science Books for 'The Man Who Loved Only Numbers', his biography of the mathematician Paul Erdős. Paul Hoffman

will speak about the genius of Erdős, and about other mathematicians he encountered along the way, in what promises to be an intimate and entertaining lecture to mark Maths Year 2000. Paul Hoffman knew Paul Erdős for more than ten years and followed him on his mathematical sojourns. Admission is free and no advance booking required although parties of six or more are asked to notify the Royal Society (tel: 020 7451 2576/9; e-mail: imelda.topping@royalsoc.ac.uk).

ADVANCED RESEARCH WORKSHOP ON FINITE GEOMETRIES

An Advanced Research Workshop on Finite Geometries will be held from Sunday 16 to Friday 21 July at the Isle of Thorns Conference Centre, Sussex. The organisers are Aart Blokhuis, James Hirschfeld, Dieter Jungnickel and Jef Thas.

The main speakers are:

- A.R. Calderbank
- P.J. Cameron
- C.E. Praeger
- B. Schmidt
- H. Van Maldeghem

The topics of this conference are:

- Combinatorial structures in finite projective spaces
- Algebraic curves over finite fields
- Geometric and algebraic coding theory
- Finite groups and geometries
- Algebraic design theory

The London Mathematical Society has made a grant to support research students at British universities for this conference. Please apply to Dr J.W.P. Hirschfeld, School of Mathematical Sciences, University of Sussex, Brighton BN1 9QH (e-mail: jwph@susx.ac.uk). For further information visit the conference web site (<http://www.maths.susx.ac.uk/Staff/JWPH/>).

LMS PROGRAMME AND CONFERENCE FUND

Members are reminded that the Society's Programme and Conference Fund is used to provide conference grants (Scheme 1), grants to visitors to the UK (Scheme 2), grants to support joint research groups (Scheme 3), collaborative small grants (Scheme 4) and International Short Visits (Scheme 5). The fund is administered by the Society's Programme Committee. Information about the various schemes was given in the January 2000 *Newsletter* (No. 278, pp 12-14), and is also on the Society's web (<http://www.lms.ac.uk/grants/index.html>). The Meetings and Membership Secretary, Dr N.M.J. Woodhouse, will be pleased to discuss proposals informally with potential applicants and to give advice on submission of an application to the Society. He can be reached at: Mathematical Institute, 24-29 St Giles, Oxford OX1 3LB (e-mail: nwoodh@maths.sox.ac.uk; tel: 01865

273525).

There is a deadline of **31 May 2000** for conference grant applications, and for Scheme 3 and Scheme 4 grant applications; these applications will be considered in June. There are no deadlines for Scheme 2 and Scheme 5: International Short Visits, but these should be made two to three months before the proposed visits, to allow for consideration by Programme Committee and subsequent publicity in the *Newsletter*. Please bear in mind, however, that applications for Scheme 2 and Scheme 5 grants which are received after 31st May 2000 will not be considered until September.

Programme Committee has recently awarded grants to support the following conferences and meetings. These are open to members. If you wish to attend, or would like more information, please contact the organiser.

Date/Venue	Title	Organizer
3-4 May 2000 Nottingham	Quantum Probabilities and Paradoxes of the Quantum Century	V. Belavkin (vpb@maths.nott.ac.uk)
20-24 Jun 2000 Bath	Sixth International Symposium on Effective Methods in Algebraic Geometry	N. Vorobjov (mega2000@maths.bath.ac.uk)
17-21 Dec 2000 Liverpool	Applications of Singularity Theory to Geometry	J.W. Bruce (jwbruce@liv.ac.uk)

ROLLO DAVIDSON TRUST

The Trustees of the Rollo Davidson Trust give notice that they have awarded Rollo Davidson Prizes for 2000 to Kurt Johansson (Royal Institute of Technology, Stockholm) and David Wilson (Microsoft Research). Johansson's prize is for his work in understanding the

Tracy-Widom distribution in a remarkable range of contexts including longest increasing subsequences and random matrices. Wilson's prize is for his work in discrete probability and computer algorithms, and in particular, exact simulation and coupling from the past.

ISAAC NEWTON INSTITUTE FOR MATHEMATICAL SCIENCES

Nonlinear Partial Differential Equations (January to June 2001)

Organisers: H. Brezis (Paris), E.N. Dancer (Sydney), J.F. Toland (Bath), N.S. Trudinger (Australian National University).

Programme Theme: This programme will emphasise selected recent developments in nonlinear elliptic and parabolic partial differential equations, together with geometric and scientific applications. It will be divided into four inter-related themes:

1. Reaction diffusion equations - Particular attention here will be given to transition layers and their applications.
2. Fully nonlinear equations - This area has developed substantially over the last two decades. Emphasis will be on Monge-Ampère equations and viscosity solutions.
3. Variational problems with singularities - This theme will focus on mathematical models arising from material science, particularly from superconductivity and liquid crystals.
4. Geometric evolution equations - The mathematical study of flows determined by geometric quantities has blossomed in recent years, with striking applications to areas such as image processing and relativity.

Workshops:

26 - 30 March	Geometric Evolution
2 - 6 April	Fully Nonlinear PDE
9 - 11 April	Multiscale Methods in Nonlinear PDEs
25 - 29 June	Singular Variational Problems
2 - 6 July	Reaction Diffusion Equations

Participation: If you are interested in possible participation in this six-month research programme, please contact Professor J.F. Toland, School of Mathematical Sciences, University of Bath (jft@maths.bath.ac.uk), specifying which part of the programme you are interested in and funding needs and/or sources of financial support. Please also supply a brief *curriculum vitae*.

The list of invited participants so far includes: B.H. Andrews (Canberra), H. Berestycki (Paris), F. Bethuel (Paris), H. Brezis (Paris), L. Caffarelli (Texas), H.D. Cao (Texas A&M), K.S. Chou (Chinese University, Hong Kong), E.N. Dancer (Sydney), K. Ecker (Monash), L.C. Evans (Berkeley), G. Friesecke (Oxford), V.A. Galaktionov (Bath), Y. Giga (Hokkaido), M. Grinfeld (Strathclyde), P.F. Guan (McMaster), C. Gui (McMaster), R.S. Hamilton (Columbia), G. Huisken (Tubingen), T. Ilmanen (ETH-Zurich), H. Ishii (Tokyo Metropolitan), N. Ivochkina (St Petersburg), M. Mimura (Horishima), W.-M. Ni (Minnesota), P. Sternberg (Indiana), J.F. Toland (Bath), N.S. Trudinger (Canberra), J.I.E. Urbas (Canberra), J.-L. Velasquez (Madrid), X.-J. Wang (Canberra), J. We (Chinese University, Hong Kong).

Further information is available at <http://www.newton.cam.ac.uk/gtf.html>

To join the programme e-mail list, please send the message
<subscribe gtf-list> to majordomo@newton.cam.ac.uk

UMTC 2000

The twenty-sixth annual

UNDERGRADUATE MATHEMATICS TEACHING CONFERENCE

*A working conference to improve the design
and delivery of the mathematics
curriculum for undergraduates*

SHEFFIELD HALLAM UNIVERSITY
4 - 7 September 2000

Guest Plenary Speakers:

Dr Simon Singh

*Television producer and author of
"Fermat's Last Theorem" and "The Code Book".*

Professor Robert P. Burn

Professor of Mathematics Education

The latest information about the conference can be obtained via the UMTC pages of the UK MathSkills website, which has internet address: <http://www.hull.ac.uk/mathskills/umtc/> or from Dr David Emery, Conference Chair, UMTC 2000 (D.J.Emery@staffs.ac.uk).

ISAAC NEWTON INSTITUTE FOR MATHEMATICAL SCIENCES

Differential Geometry in Fluid Dynamics and Dynamical Systems BRIMS DAY: 20 November 2000

Organiser: Professor Tsutomu Kambe (Tokyo)

Speakers: Y. Brenier (Paris), Y. Fukumoto (Kyushu), D. Holm (Los Alamos), T. Kambe (Tokyo), B. Khesin (Toronto), G. Misiolek (Notre Dame), T. Ratiu (EPFL)

Programme Theme: Dynamical systems with finite or infinite number of degrees of freedom, such as hydrodynamics, magnetohydrodynamics, and various integrable systems, often have certain symmetry groups. Recent advances in the description of behaviour of those systems are related to the study of differential geometry of the corresponding groups. The geometric theory allows one to describe both quantitative and qualitative global properties of trajectories of such systems.

For instance, the time evolution of a flow of an ideal incompressible fluid is governed by the geodesic equation on the group of volume-preserving diffeomorphisms. Kinetic energy defines the corresponding right-invariant metric on that group. Thus group theory and differential geometry provide a natural framework for the description of fluid motions. This approach, originally suggested by V. Arnold in 1966 for an ideal fluid, its later extensions to various media, magnetohydrodynamics, and integrable systems, as well as recent spectacular achievements in these areas, will be the subject of this workshop. This scope of mathematical ideas gives a profound insight on the nature of various physical systems, both finite and infinite-dimensional, and opens new areas for study. Moreover, numerous applications to incompressible and compressible, homogeneous and stratified fluids, MHD fluid, rigid bodies, and many other dynamical systems have proved to be fruitful for the mathematical theories involved.

This meeting is being supported by Hewlett-Packard's Basic Research Institute in the Mathematical Sciences (BRIMS) and the Isaac Newton Institute. Further Information about BRIMS is available at <http://www-uk.pl.hp.com/brims/home.html>

Further Information: Lunch will be available for a nominal charge; please let Tracey Andrew at the Institute know by 31 October 2000 if you intend to come, to help us plan for lunch: telephone: (01223) 335984; fax: (01223) 330508; e-mail: t.andrew@newton.cam.ac.uk There are limited funds available to assist research students to attend: **please apply by 31 October 2000** to Tracey Andrew at the Institute.

Scientific enquiries may be addressed to Professor Tsutomu Kambe (kambe@phys.s.u-tokyo.ac.jp).

THE INSTITUTE OF MATHEMATICS AND ITS APPLICATIONS



FORTHCOMING CONFERENCES

MILLENNIUM EVENT IN CONJUNCTION WITH WORLD MATHEMATICS YEAR
UCL, London, UK 8 May 2000

MATHEMATICS IN MEDICAL SCIENCES AND HEALTHCARE
Glasgow Caledonian University, UK 7 June 2000

NINTH MATHEMATICS OF SURFACES
Cambridge, UK 4 – 6 September 2000

THIRD QUANTITATIVE MODELLING IN THE MANAGEMENT OF HEALTH CARE
University of Salford, UK 5 – 7 September 2000

SECOND INTERNATIONAL BOUNDARY INTEGRAL METHODS: THEORY AND APPLICATIONS
University of Bath, UK 12 – 16 September 2000

AN INTERDISCIPLINARY WORKSHOP ON INNOVATIVE BOUNDARY ELEMENT TECHNIQUES IN COMPUTATIONAL ACOUSTICS AND ELECTROMAGNETICS
University of Bath, UK 14 – 15 September 2000

SHORT COURSE AND THIRD IMAGING AND DIGITAL IMAGE PROCESSING: MATHEMATICAL METHODS, ALGORITHMS AND APPLICATIONS
De Montfort University, Leicester, UK 12-15 September 2000

SHORT COURSE AND FIRST FRACTAL GEOMETRY: MATHEMATICAL TECHNIQUES, ALGORITHMS AND APPLICATIONS
De Montfort University, Leicester, UK 19-22 September 2000

FIFTH MATHEMATICS IN SIGNAL PROCESSING
University of Warwick, UK 18 - 20 December 2000

THIRD SPATIAL PATTERNS IN PERMEABLE ROCKS
Churchill College, Cambridge, UK 27 - 29 March 2000

FOURTH MODELLING IN INDUSTRIAL MAINTENANCE AND RELIABILITY
University of Salford, UK 9-11 April 2001

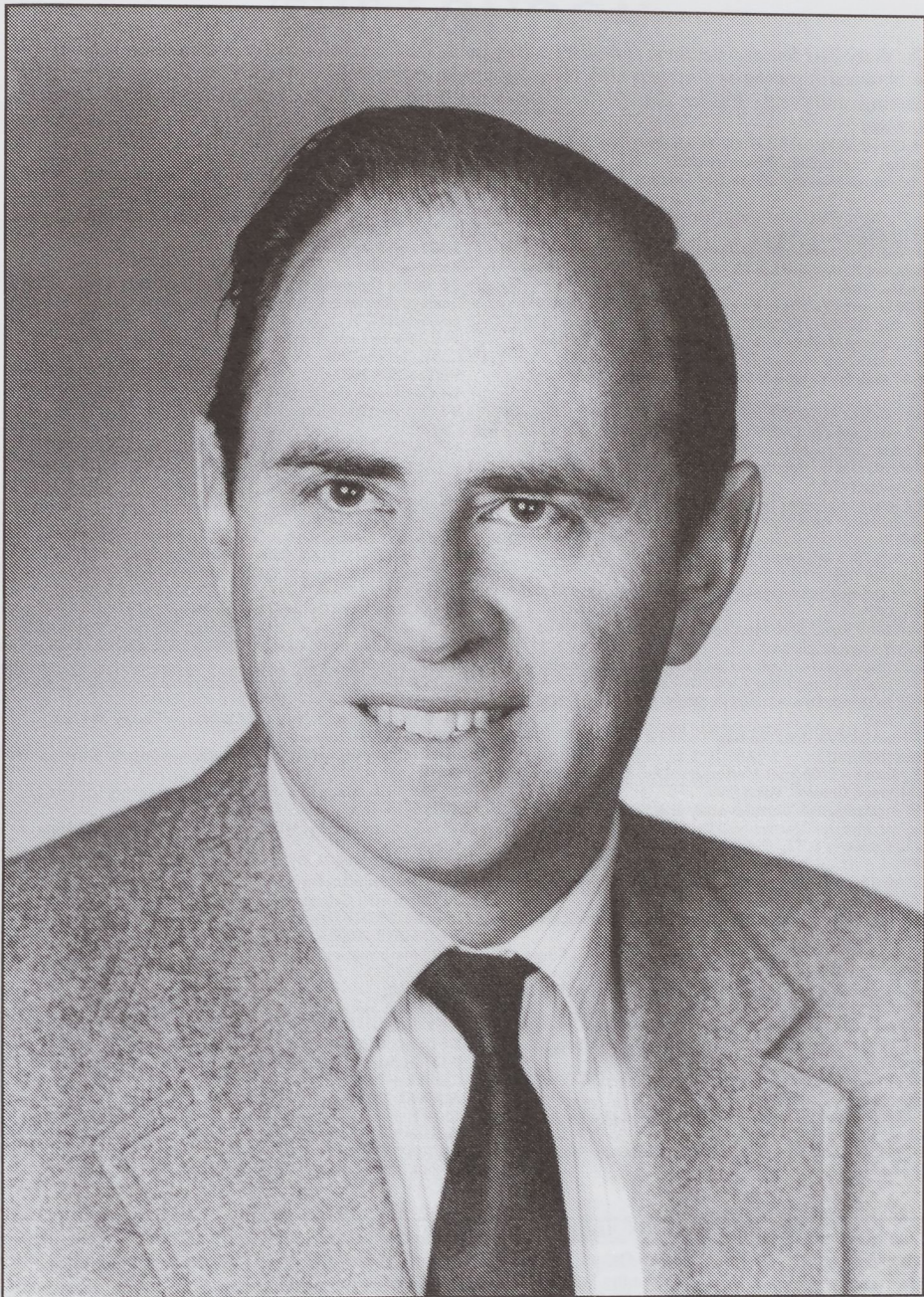
ECCOMAS 2001
Swansea, UK 4 - 7 September 2001

ADVANCED SIMULATION AND CONTROL FOR AUTOMOTIVE APPLICATIONS
Keble College, Oxford, UK 24 - 26 September 2001

FURTHER DETAILS FROM:
Pamela Bye, Conference Officer
The Institute of Mathematics and its Applications
Catherine Richards House
16 Nelson Street
Southend-on-Sea
Essex SS1 1EF.

Tel: (01702) 354020
Email: conferences@ima.org.uk

Fax: (01702) 354111
Web: www.ima.org.uk



P.J. COHEN
HONORARY MEMBER 1973

DIARY

The diary lists Society meetings and other events publicized in the *Newsletter*. Further information can be obtained from the appropriate LMS Newsletter whose number is given in brackets. A fuller list of meetings and events is given in the Society's web site (<http://www.lms.ac.uk/meetings/diary.html>).

MAY 2000

- 3-4 Quantum Probabilities and Paradoxes of the Quantum Century, Nottingham University (282)
- 5 Edinburgh Mathematical Society Meeting, Stirling University (275)
- 10 The Man Who Loved Only Numbers, Public Lecture, Royal Society, London (282)
- 14 Nonlinearity Meeting, University College London (282)
- 18 Model Theory and Set Theory Meeting, De Morgan House, London (282)
- 19-20 Hilbert's Problems: Past and Future, 2-day BSHM-LMS Meeting, Oxford (278) (282)
- 22 Gregynog Mathematics Colloquium, Gregynog (281)
- 26 Scottish Algebra Day, Edinburgh University (281)
- 26-27 Arakelov Geometry Seminar, Montpellier University II (281)
- 26-27 Groups in Galway 2000 Conference, National University of Ireland, Galway (279)
- 28-3 Jun Combinatorics 2000 Conference, Gaeta, Italy (278)
- 30 North British Functional Analysis Seminar, Edinburgh University (282)
- 31-1 June MathEngine Lectures on Computational Rheology, University of Wales Aberystwyth (281)

JUNE 2000

- 2 Edinburgh Mathematical Society Meeting, St Andrews University (275)
- 3-7 Association for Symbolic Logic Annual Meeting, Illinois, USA (278)
- 13-16 AMS Scand 2000 Meeting, Odense, Denmark (278)
- 23 LMS Meeting, London
- 24-30 Numerical Methods for Evolution Partial Differential Equations Euroconference, Crete, Greece (280)
- 25-29 European Dynamics Days, Surrey University (280)
- JULY 2000
- 3-7 Functional Analysis Meeting, Technical University, Valencia, Spain (265)
- 3-7 Alhambra 2000 Joint Mathematical European-Arabic Conference, Granada, Spain (280)
- 3-14 Approximation, Complex Analysis & Potential Theory Seminar, Montreal University (276)
- 9 - 22 Geometry & Topology Workshop, Warwick University (277)
- 10-14 3rd European Congress of Mathematics, Barcelona, Spain (272) (279)
- 10-14 Free Surface Flows IUTAM Symposium, Birmingham University (272)
- 10-14 Disordered and Complex Systems Conference, King's College, London (278)
- 10-14 Dynamical Systems ICMS Workshop, Edinburgh (279)
- 10-14 Noncommutativity - Geometry and Probability International Conference, Nottingham Trent University (282)
- 16-21 Finite Geometries Advanced Research Workshop, Isle of Thorns, Sussex (282)
- 17-21 Integrable Systems in Differential Geometry, Tokyo, Japan (275)
- 17-22 International Congress on Mathematical Physics, Imperial College, London (257) (278)
- 22-28 New Mathematical Methods in Continuum Mechanics Euroconference, Crete, Greece (280)

- 23-31 Association for Symbolic Logic European Summer Meeting, Paris, France (278)

- 24-2 Aug New Analytic and Geometric Methods in Inverse Problems, EMS Euro Summer School, ICMS Edinburgh (279)

- 29 - 4 Aug Curves and Abelian Varieties over Finite Fields and their Applications Euroconference, Crete, Greece (280)

AUGUST 2000

- 2-18 Large Rings, Modules and Representations, Constanta, Romania (281)

- 3-5 Recent Development in the Wave Field and Diffuse Tomographic Inverse Problems EuroConference, ICMS Edinburgh (279)

- 19-25 Discrete and Algorithmic Geometry Euroconference, Crete, Greece (280)

SEPTEMBER 2000

- 1-4 Constantin Caratheodory Congress, Evros, Greece (279)

- 3-9 Operator Function Theory and Semigroups, Ambleside (281)

- 4-7 UMTC 2000, Sheffield Hallam University (282)

- 4-8 Partial Differential Equations, LMS/EPSC Short Course, Bath University (282)

- 4-8 Mathematical Biology, LMS/EPSC Short Course, Nottingham University (282)

- 4-8 Current Environmental Issues: Quantitative Methods Meeting, TIES/SPRUCE 2000, Sheffield University (280)

- 4-15 Spatial Structures in Biology Summer School, Taranto, Italy (279)

- 10-17 Geometry of Quiver-Representations and Preprojective Algebras Summer School, Isle of Thorns, Sussex University (275)

- 11-16 Set Theory and Analysis, LMS/EPSC Short Course, Leeds University (282)

- 13-15 Royal Statistical Society International Conference, Reading University (277)

- 15-18 Physical Interpretations of Relativity Theory Meeting, Imperial College London (277)

- 18-23 Differential Geometry International Congress, Bilbao, Spain (275)

- 19 Flexible Learning in Mathematics, Birmingham University (281)

- 27 Set Theory and its Neighbours: Games, De Morgan House, London

NOVEMBER 2000

- 18-22 Mathematics for Living Conference, Jordan (280)

- 20 Differential Geometry in Fluid Dynamics and Dynamical Systems, BRIMS Day, Isaac Newton Institute, Cambridge (282)

DECEMBER 2000

- 18-20 Mathematics in Signal Processing, Warwick University (279)

APRIL 2001

- 9-12 British Mathematical Colloquium, Glasgow University

JULY 2001

- 1-6 British Combinatorial Conference, Sussex University (276)

- 9-13 Stochastic Processes and their Applications Conference, Cambridge (275)

AUGUST 2001

- 12-19 Homological Conjectures for Finite-Dimensional Algebras Summer School, Nordfjordeid, Norway (275)

AUGUST 2002

- 20-28 ICM2002, Beijing, China (272)

The Newsletter is published monthly except in August. Items and advertisements for inclusion in the Newsletter should be sent to the Editor, Susan Oakes, by e-mail, fax or post to the LMS office (addresses below), to arrive before the first day of the month prior to publication.

The London Mathematical Society, De Morgan House, 57-58 Russell Square, London WC1B 4HP

Tel: 020 7291 9977 fax: 020 7323 3655, e-mail: lms@lms.ac.uk.

World Wide Web: <http://www.lms.ac.uk/>

The London Mathematical Society is registered with the Charity Commissioners.