

THE LONDON MATHEMATICAL SOCIETY NEWSLETTER

No. 287

November 2000

FORTHCOMING SOCIETY MEETINGS

Friday 24 November 2000 - London

Annual General Meeting

T.C. Chinburg, M.J. Taylor (Presidential Address)

10 February 2001 - Oxford

Dame Mary Cartwright Lecture

C.S. Morawetz, K.W. Morton

Wednesday 28 February 2001 - Birmingham

Inaugural LMS Regional Meeting (Midlands)

COLLINGWOOD MEMORIAL PRIZE

The 2000 Collingwood Memorial Prize has been awarded to Paul B. Bostock, College of St Hild and St Bede, who will study for a PhD in Mathematical Physics at Durham. The Collingwood Memorial Prize, established in memory of Sir Edward Collingwood FRS, President of the Society 1969-1970, is awarded to a final year mathematics student at the University of Durham who intends to continue to a higher degree in mathematics at Durham or any other university.

ANNUAL DINNER

The Annual Dinner will be held after the Annual General Meeting on Friday 24 November at 7.15 pm at The Montague Hotel, 15 Montague Street, London WC1. The cost is £30.00 per person and members may book places for guests. The booking form, enclosed with the October *Newsletter*, should be returned together with payment to the London Mathematical Society office by **Monday 20 November**.

PUBLISH WITH THE LMS!

For the past two years, the *Journal* of the LMS has been substantially enlarged, in order to publish a massive backlog of accepted papers that had built up in the previous few years. During this period, the Editors have strictly rationed the number of new papers accepted for publication. In addition, some authors have had to endure delays in the publication of their papers.

I am happy to report that through the heroic efforts of the *Journal* Editors, Professors J.R. Partington and J.K. Truss, the backlog has been eliminated. From 2001, the *Journal* will revert to its normal size of 256 pages per issue.

Any authors who may have been deterred from submitting papers to the LMS because of the high rejection rate and publication delays are assured that the situation is now back to normal. Please consider sending your best papers to our prestigious journals!

Christopher Lance
Publications Secretary

2001 MEDAL AND PRIZES

In the year 2001, the Council expects to award the De Morgan Medal, a Senior Whitehead Prize, a Berwick Prize and up to four Whitehead Prizes. A Prizes Committee has been appointed its membership is:

Professor J.T. Stuart (Chair)
Professor S.K. Donaldson
Professor T.J. Lyons
Professor A.J. Macintyre
Professor U. Martin
Professor J.F. Toland
Professor L.N. Trefethen
Professor J.R. Willis

j.stuart@ic.ac.uk
s.donaldson@ic.ac.uk
lyons@maths.ox.ac.uk
angus@maths.ed.ac.uk
um@dc.sst-and.ac.uk
jft@maths.bath.ac.uk
lnt@comlab.ox.ac.uk
jrw@maths.bath.ac.uk

Members of the Society are invited to submit their views on possible candidates to the President-designate, Professor J.T. Stuart (The President, London Mathematical Society, De Morgan House, 57-58 Russell Square, London WC1B 4HS; president@lms.ac.uk) or to any other member of the Prizes Committee by **5 January 2001**. Nominations should contain explicit reference to the grounds on which the nomination is based, and brief descriptions of the criteria for each Prize are given below. Council reserves the right not to make an award of any particular Prize in the event that no candidate of sufficient merit is recommended by the Prizes Committee.

The **De Morgan Medal** is awarded for the recipient's contribution to mathematics.

The **Senior Whitehead Prize** can only be awarded to a mathematician who is normally resident in the United Kingdom on 1 January 2001. Grounds for the award may include work in, influence on or service to mathematics, or recognition of lecturing gifts in the service of mathematics. This prize may not be awarded to any person who has previously received the De Morgan Medal, the Polya Prize, the Senior Berwick Prize or the Naylor Prize.

The **Berwick Prize** is awarded to a mathematician who on 1 January 2001 is a member of the Society, is under the age of forty years (except that this age restriction may be relaxed when it appears desirable to do so in order to take fair account of broken career patterns) and is

not already a Fellow of the Royal Society; it is awarded in recognition of an outstanding piece of mathematical research actually published by the Society during the eight years ending on 31 December 2000. This Prize may not be awarded to anyone who has won any of the Society's other Prizes, other than the Whitehead Prize.

The **Whitehead Prizes** are awarded to mathematicians who on 1 January 2001 are normally resident in the United Kingdom or members of the Society mainly educated in the United Kingdom, who are not already Fellows of the Royal Society, and who are under the age of forty years (except that this age restriction may be relaxed when it appears desirable to do so in order to take fair account of broken career patterns). Grounds for the award may include work in and influence on mathematics. This Prize may not be awarded to anyone who has won any of the Society's other Prizes. Members are reminded that the scope of the Whitehead Prizes includes all aspects of mathematics, and Council has emphasised that this includes applied mathematics, mathematical physics and mathematical aspects of computer science.

Details of the regulations and the procedure for awarding the Prizes may be obtained from the Administrator, London Mathematical Society, De Morgan House, 57-58 Russell Square, London WC1B 4HS (oakes@lms.ac.uk).

John Pym
Council and General Secretary

LONDON MATHEMATICAL SOCIETY

Annual General Meeting

Friday 24 November 2000 at 3.15 pm

Professor T.C. CHINBURG
(University of Pennsylvania)
will speak at 3.30 pm on

The Geometry of Gauss Sums

Professor M.J. TAYLOR, FRS (UMIST)
will give his Presidential Address
at 5.00 pm on

L-functions and Euler Characteristics

All interested are very welcome
Tea will be served at 4.30 pm

The meeting will be held in the Darwin Lecture Theatre,
University College London, Gower Street, London WC1

Please note early start

Some funds are available to contribute in part to the expenses of members of the Society or research students who wish to attend the meeting. Requests for support should be addressed to the Meetings and Membership Secretary, London Mathematical Society, De Morgan House, 57-58 Russell Square, London WC1B 4HS (requests should include an estimate of expenses and a very brief *curriculum vitae*; research students should include brief letters of endorsement from their supervisors).

Enquiries may be addressed to Miss Susan M. Oakes
(tel: 020 7637 3686, e-mail: lms@lms.ac.uk).

LONDON MATHEMATICAL SOCIETY

DAME MARY CARTWRIGHT LECTURE

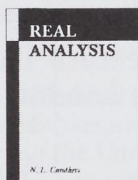
Saturday 10 February 2001

Room L2, The Mathematics Institute, Oxford.

- 3.30-4.30 Professor Bill Morton
*Evolution Operators and Numerical Modelling
of Hyperbolic Equations*
- 4.30-5.00 Tea
- 5.00-6.00 The Dame Mary Cartwright Lecture
Professor Cathleen Synge Morawetz
Mathematics and Flying Aeroplanes

A dinner will be held after the meeting at St Hughs College, Oxford (approximately £25 with wine). Further details will appear in the January Newsletter.

CAMBRIDGE



Real Analysis

N. L. Carothers

This is a course in real analysis directed at advanced undergraduates and beginning graduate students in mathematics and related fields.

£52.50 HB 0 521 49749 3 432pp 2000
£19.95 PB 0 521 49756 6

TEXTBOOK

When Topology Meets Chemistry

A Topological Look at Molecular Chirality

Erica Flapan

Knot theory, 3-dimensional manifolds, and embedded graphs, and the role these play in understanding molecular structures.

£45.00 HB 0 521 66254 0 256pp 2000
£16.95 PB 0 521 66482 9

Cambridge books are available from good bookshops. Alternatively phone UK + 44 (0)1223 326050 to order direct using your credit card, or fax UK + 44 (0)1223 325152. For further information, please email grobertson@cup.cam.ac.uk



CAMBRIDGE
UNIVERSITY PRESS

The Edinburgh Building, Cambridge, CB2 2RU, UK
www.cambridge.org

BRITISH WOMEN IN MATHEMATICS

The next meeting will be on Wednesday 10 January 2001 at the London Mathematical Society, De Morgan House, 57-58 Russell Square, London WC1B 4HS. The main speakers will be Fay Dowker (QMW) "Unifying the Universe" and Alison Etheridge (Oxford) "How does a Probabilist solve the Heat Equation". Other speakers will be Juliette White (RHB), Nicole Snashall (Leicester), Jane Hutton (Newcastle) and Bindi Brook (Sheffield). There will also be a discussion on Mentoring led by Ursula Martin (St Andrew's). The first lecture will commence at 11.15 am. The cost will be £5 to cover coffee, tea and a buffet lunch. All are welcome (whether or not British or a woman) but those intending to come should contact Leone Oscar at the London Mathematical Society (oscar@lms.ac.uk) as numbers are limited. Some help will be available for travel expenses for research students. For more details contact Helen Robinson (h.robinson@coventry.ac.uk).

NONLINEAR MECHANICS

There will be a meeting on the theme of Nonlinear Mechanics on 6 November, at the Conference Centre, University of Bath hosted by the Bath Centre for Nonlinear Mechanics. This meeting will be a mixture of presentations and informal discussion with the aim of generating discussion between different disciplines. The meeting aims to identify clear links between applied mathematics, engineering and industry, based around a common theme of nonlinear problems. It will provide a showcase of successful applications of ideas in nonlinear systems to a wide variety of engineering problems showing clearly the importance of the underpinning by mathematical ideas. The organisers are grateful to the LMS for their generous financial support.

The speakers are as follows:

- J.M.T. Thompson *Twisted rods*
- M.A. Peletier *Global minimization, monotonicity, and complexity reduction in fourth-order ODE's*
- A. Nordmark *Non-smooth dynamics*
- K. Popp *Vibration damping using dry friction forces*
- R. Kuske *Envelope equations for heterogeneous patterns and noisy transitions.*

After the meeting discussions will continue over dinner. All are welcome and there is no registration fee. If you are interested in coming e-mail Professor Chris Budd (cjb@maths.bath.ac.uk) or Professor Giles Hunt (g.w.hunt@bath.ac.uk) before the meeting.

SLAWOMIR J. BIEL

Dr Slawomir J. Biel, who was elected a member of the London Mathematical Society on 18 March 1965, died on 1 September 2000.

53RD BRITISH MATHEMATICAL COLLOQUIUM

The 53rd British Mathematical Colloquium will take place at the University of Glasgow from 9 to 12 April 2001. The principal speakers will be Henri Berestycki, Michel Broué, Henri Darmon and Clifford Taubes. There will be special sessions on Partial Differential Equations and Modular Forms. For further information, consult the website at www.maths.gla.ac.uk/bmc2001, send an e-mail to bmc2001@maths.gla.ac.uk, or write to British Mathematical Colloquium, Department of Mathematics, University of Glasgow, University Gardens, Glasgow G12 8QW. The British Mathematical Colloquium is supported by the London Mathematical Society and the Glasgow Mathematical Journal Trust.

CONFERENCE ON LÉVY PROCESSES AND STABLE LAWS

A conference on "Lévy Processes and Stable Laws" will take place at Warwick University from 2 - 6 April 2001. Each day of this meeting will be devoted to exploring recent developments in one of the five themes: Lévy processes - basic theory, stable laws, applications (including finance and quantum theory), stochastic calculus and Lévy-type Markov processes. The list of speakers includes the following:

S.J. Taylor (Sussex), J.F. LeGall (ENS), M. Marcus (CUNY), R. Doney (Manchester), K-I. Sato (Nagoya), A. Weron (Wroclaw), J. Rosinski (Tennessee), T. Mikosch (Groningen), S. Albeverio (Bonn), E. Eberlein (Freiberg), N. Bouleau (ENPC), H. Kunita (Nanzan), J. Picard (Blaise Pascal), A. Estrade (Orleans), H. Heyer (Tubingen), R. Schilling (Sussex), Z. Chen (Seattle), V. Kolokoltsov (Nottingham Trent), O. Barndorff-Nielsen (Aarhus).

Further details can be found on the website (<http://science.ntu.ac.uk/msor/conf/Levy/>). To participate in the conference contact Peta McAllister (tel: 024 7652 4403, fax: 024 7652 3548, peta@maths.warwick.ac.uk). The organisers thank the London Mathematical Society and the European Union for financial support. In particular there is funding available for suitably qualified graduate students at UK universities.

YORKSHIRE DIFFERENTIAL GEOMETRY DAY

A Yorkshire Differential Geometry Day is to be held at the University of York on Wednesday 29 November, supported by an LMS Scheme 3 grant. The speakers include: Professor Jim Eells (Cambridge), Professor Henrik Pedersen (Odense, visiting Oxford), Dr Martin Sleight (Leeds). All are welcome to attend, and further information can be found on the website (<http://www-users.york.ac.uk/~cmw4/ydgd.html>).

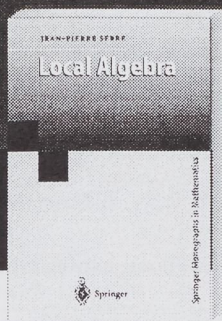
RAISING PUBLIC AWARENESS OF MATHEMATICS IN EUROPEAN SCIENCE AND TECHNOLOGY WEEK

Using related actions and printed posters in public transport during the week 6-13 November 2000 (RPAMath) this EC:DGXII-supported project (see <http://www.sees.bangor.ac.uk/public/cpm/rpamath/>) is led by Professor Mireille Chaleyat-Maurel of the Société Mathématique de France, and includes also Professor Vagn L. Hansen (Lyngby), representing the European Mathematical Society (EMS), and Professor Ronnie Brown (Bangor) for Bangor's Centre for the Popularisation of Mathematics. The RPAMath cross-platform CDROM resulting from this project is based on successful web sites at Bangor, but reprogrammed by Mike Yates to systematize, to run large animations, and with extra material, such as posters resulting from the Paris and EMS work. It will be launched at Obidos, Portugal, on 11 November. Copies of the CDROM will be distributed to members of the Sociedade Portuguesa de Matematica (SPM) with the autumn issue Bulletin of the SPM. For further information, contact Ronnie Brown (r.brown@bangor.ac.uk).

2000 TWENTE CONFERENCE ON LIE GROUPS

2000 Twente conference on Lie Groups will be held from 18-20 December 2000 at the University of Twente, The Netherlands. The list of speakers so far are: U. Bunke (Göttingen), R. Camporesi (Turin), B. Enriquez (Paris), S. Gindikin (Rutgers), A.G. Helminck (Brandeis), T. Kobayashi (Tokyo), D. Krammer (Basel), V. Molchanov (Tambov), K-H. Neeb (Darmstadt), C. Ohn (Reims), M. Primc (Zagreb), V. Tarasov (St Petersburg), A. Vershik (St Petersburg), G. Zhang (Stockholm). More information can be obtained at the website (<http://www.math.utwente.nl/~lie>), where you can also register.

Hot off the press



J-P. Serre

Local Algebra

This is an English translation of the now classic "Algèbre Locale - Multiplicités". It gives a short account of the main theorems of commutative algebra, with emphasis on modules, homological methods and intersection multiplicities ("Tor-formula"). Many modifications to the original French text have been made by the author for this English edition: They make the text easier to read, without changing its intended informal character".

2000. XIII, 129 pp. (Springer Monographs in Mathematics) Hardcover
* DM 79,-; FF 298,-; £ 27,-; Lit. 87.250
ISBN 3-540-66641-9

F. Lemmermeyer

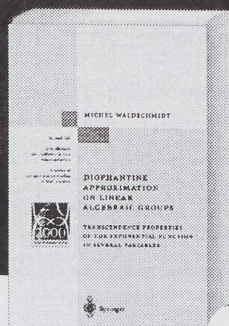
Reciprocity Laws

From Euler to Eisenstein

2000. XIX, 487 pp.
(Springer Monographs in Mathematics) Hardcover
* DM 129,-; FF 486,-; £ 44,50;
Lit. 142.460 ISBN 3-540-66957-4

Please order from
Springer · Customer Service
Haberstr. 7
69126 Heidelberg, Germany
Tel: +49 6221 345-217/-218
Fax: +49 6221 345-229
e-mail: orders@springer.de
or through your bookseller

* Recommended retail prices. Prices and other details are subject to change without notice. In EU countries the local VAT is effective. dtp - 6880/MINT/ST



M. Waldschmidt

Diophantine Approximation on Linear Algebraic Groups

Transcendence Properties of the Exponential Function in Several Variables

This book deals with values of the usual exponential function e^z ; a central open problem is the conjecture on algebraic independence of logarithms of algebraic numbers. It includes proofs of the main basic results, an introduction to height functions and Lehmer's problem, several proofs of Baker's theorem as well as explicit measures of linear independence of logarithms.

2000. XXVII, 633 pp. (Grundlehren der mathematischen Wissenschaften, Vol. 326) Hardcover
* DM 169,-; FF 637,-; £ 58,50;
Lit. 186.640 ISBN 3-540-66785-7

Z. Mei

Numerical Bifurcation Analysis for Reaction- Diffusion Equations

2000. XIV, 414 pp. (Springer Series in Computational Mathematics, Vol. 28)
Hardcover * DM 159,-; FF 599,-; £ 55,-;
Lit. 175.600 ISBN 3-540-67296-6

R. Liptser, A.N. Shiryaev

Statistics of Random Processes I General Theory

2nd rev. and exp. ed. 2000. XII,
421 pp. (Applications of Mathematics,
Vol. 5) Hardcover
* DM 129,-; FF 486,-; £ 44,50;
Lit. 142.460 ISBN 3-540-63929-2

R. Liptser, A.N. Shiryaev

Statistics of Random Processes II Applications

2nd, rev. and exp. ed. 2000. X,
402 pp. (Applications of Mathematics,
Vol. 6) Hardcover
* DM 129,-; FF 486,-; £ 44,50;
Lit. 142.460 ISBN 3-540-63928-4

T.A. Springer, F.D. Veldkamp

Octonions, Jordan Algebras, and Excep- tional Groups

2000. VIII, 208 pp. (Springer Mono-
graphs in Mathematics) Hardcover
* DM 139,-; FF 524,-; £ 48,-;
Lit. 153.520 ISBN 3-540-66337-1

You are one click away from a world
of mathematics information!
Come and subscribe to our free
alerting service for new books:
<http://www.springer.de/math>



Springer

RECORDS OF PROCEEDINGS AT MEETINGS

ORDINARY MEETING

held on Friday 23 June 2000 at University College London. About 27 members and visitors were present for all or part of the meeting.

The meeting began at 3:30 pm, with Professor M.J. TAYLOR, FRS, in the Chair. Fifteen people were elected to Ordinary Membership: M.M. Anttila, J.M. Ford, P. Garcia, C.J. Howls, A.F. Jarvis, V.N. Kolokoltsov, C.M. Linton, P.N.I.D. Matteucci, G.P. Parry, I. Rivin, M.S. Ruderman, N. Shah, Y.D. Shikhmurzaev, A.M. Stuart, C.P. Walkden.

A lecture was given by Professor M.D. Buhmann on 'Radial basis functions: existence and variational properties'.

After tea, a

GENERAL MEETING

was held with Professor M.J. TAYLOR, FRS, in the Chair. On a motion proposed by Council, it was agreed to replace the existing By-Laws by new ones. These had been circulated to members earlier.

The Ordinary meeting then resumed. Two members signed the book and were admitted to the Society.

The President, on Council's behalf, proposed that Professor Freeman J. Dyson, FRS, be elected to Honorary Membership of the Society. This was approved by acclaim. The President read a short version of the citation to be published in the *Bulletin*.

The President announced the awards of the Polya Prize to Professor T.J. Lyons of Oxford University, the Senior Berwick Prize to Professor J.F. Toland, FRS, of Bath University, the Naylor Prize to Professor A.S. Fokas of Imperial College, London, and Whitehead Prizes to Dr M.A.J. Chaplain of Durham University, to Dr G.M. Stallard of the Open University, to Professor A.M. Stuart of Warwick University and to Dr B.J. Totaro of Cambridge University. The President read short versions of the citations to be published in the *Bulletin*.

A lecture was then given by Professor M.J.D. Powell, FRS, on 'The accuracy of radial basis function interpolation'

ORDINARY MEETING

held on Thursday 13 July 2000 at the Palau de Congressos, Barcelona, during the Third European Congress of Mathematics, Professor M.J. TAYLOR, FRS, President, in the Chair. There were present about 60 members and visitors. Six people were elected to Ordinary Membership: M. Ainsworth, E.V. Ferapontov, M.R. Green, T. Honda, A. Parker, H. Zhao; two were elected to Associate Membership: J.T. Fairley, A. Reuter; and two were elected to Reciprocity Membership: R.-P. Mages (Soc. Math. de France) and R.R. Mortini (Amer. Math. Soc.).

The President gave a short address welcoming members and visitors to the meeting, expressing his delight that members not resident in the United Kingdom could meet representatives of the Society, and giving a particular welcome to the President and Secretary of the Local Organising Committee, and to the President and members of the Executive Committee of the European Mathematical Society. Fifteen members signed the membership book and were admitted to the Society.

LMS PROGRAMME AND CONFERENCE FUND

Programme Committee has recently awarded grants to support the following conferences and meetings. These are open to members. If you wish to attend, or would like more information, please contact the organiser.

Date/Venue	Title	Organizer/e-mail
6 November 2000 Bath	Nonlinear Mechanics	C.J. Budd cjb@maths.bath.ac.uk
24 January 2001 Open	Open University Winter Combinatorics Meeting	B. Maenhaut b.m.maenhaut@open.ac.uk
2-6 April 2001 Warwick	Lévy Processes and Stable Laws	D.B. Applebaum dba@maths.ntu.ac.uk
7-9 April 2001 ICMS or Edinburgh	16th British Topology Meeting	P. Turner paul@ma.hw.ac.uk
9 April 2001 Glasgow	Alfred Goldie 80th Birthday Conference	K.A. Brown k.brown@maths.gla.ac.uk
May or June 2001 Warwick	Stochastic PDEs in Mathematical Finance	K.D. Elworthy kde@maths.warwick.ac.uk
2-5 June 2001 Glynog	The Heritage of I. Schur's 1901 Dissertation	A.O. Morris aom@aber.ac.uk
25-28 June 2001 Newcastle	Banach Algebras and Cohomology	N.J. Young n.j.young@ncl.ac.uk
1-6 July 2001 Sussex	18th British Combinatorial Conference	P. Rowlinson p.rowlinson@stirling.ac.uk
19-21 July 2001 Oxford	Applied Nonlinear Analysis and Differential Equations	S.D. Howison howison@maths.ox.ac.uk
22-23 September 2001 Oxford	History of Mathematical Table Making	R. Flood raymond.flood@conted.ox.ac.uk
26-27 July 2002 Glynog	Conference to mark the 65th Birthday of Professor M.S.P. Eastham	W.D. Evans evanswd@cf.ac.uk
7-10 April 2003 Birmingham	British Mathematical Colloquium 2003	R.A. Wilson r.a.wilson@bham.ac.uk

ICM/2002 BEIJING

The London Mathematical Society has been invited to suggest names for the plenary lectures for the International Congress of Mathematicians in Beijing in 2002. Suggestions from members, with brief justifications, should be sent, for consideration, to the President at De Morgan House (president@lms.ac.uk) to reach him by **1 December 2000**.

ACADÉMIE DES SCIENCES

Professor J.D. Murray, FRS, has been elected a Foreign Member of the Académie des Sciences.

DEPARTMENTAL NEWS

University of Essex Peter M. Higgins has been promoted from Reader to Professor as from October 1st.



STATISTICAL LABORATORY

Professorship of Statistical Science

Applications are invited for the Chair of Statistical Science in the University of Cambridge. The successful candidate will be a scientist with a distinguished research record in an area of statistics or stochastics. Areas of interest to the University include statistical science (theoretical and applied) and the applications of statistical and probabilistic methods to cognate fields including biology, genetics, economics, and mathematical finance. The person appointed will be expected to carry out his or her duties within the Statistical Laboratory, in the Department of Pure Mathematics and Mathematical Statistics. The Statistical Laboratory was awarded the highest grade of 5* in the last Research Assessment Exercise.

The Statistical Laboratory is responsible for teaching courses in Probability, Statistics and the Mathematics of Operational Research within the University's Mathematical Tripos, and for teaching the MPhil in Statistical Science. There are over 200 students in each of the three undergraduate years of the Tripos; in addition there are usually about 12 graduate students following the MPhil and about 20 research students.

The new Professor will join a Laboratory of about twenty teaching and research staff. Interests cover the broad area of Applicable Mathematics, and currently include a number of fruitful collaborations with outside groups in industry and commerce, as well as other academic departments and research units. Links with these groups include applied projects for the MPhil and joint supervision of research students, as well as collaborative research.

The Laboratory has recently moved to a purpose-designed pavilion adjacent to the Isaac Newton Institute in Clarkson Road, as part of the relocation of the entire Faculty of Mathematics to new accommodation of the highest quality. In addition to the offices, meeting rooms, and common rooms, there is an excellent computer network utilizing a mixture of PCs and HP workstations. Information about the Laboratory may be obtained via <http://www.statslab.cam.ac.uk>.

Further information may be obtained from the Secretary General of the Faculties, The General Board Office, The Old Schools, Cambridge CB2 1TT, to whom applications should be sent, together with the names of two referees, so as to reach him not later than **20 November 2000**. Informal enquiries may be made to Professor Geoffrey Grimmett, Statistical Laboratory, Centre for Mathematical Sciences, Wilberforce Road, Cambridge, CB3 0WB (e-mail: g.r.grimmett@statslab.cam.ac.uk, telephone +44 1223 337958).

New from Princeton

Now Available

Cycles, Transfers, and Motivic Homology Theories

Vladimir Voevodsky, Andrei Suslin, and Eric M. Friedlander

The original goal that ultimately led to this volume was the construction of "motivic cohomology theory." This is achieved in the book's fourth paper, using results of the other papers whose additional role is to contribute to our understanding of various properties of algebraic cycles. The material presented provides the foundations for the recent proof of the celebrated "Milnor Conjecture" by Vladimir Voevodsky.

Annals of Mathematics Studies, 143

Paper \$24.95 £15.95 ISBN 0-691-04815-0

Cloth \$59.50 £38.00 ISBN 0-691-04814-2

Euler Systems **Karl Rubin**

One of the most exciting new subjects in Algebraic Number Theory and Arithmetic Algebraic Geometry is the theory of Euler systems. Here, in the first book to appear on the subject, Karl Rubin presents a self-contained development of the theory of Euler systems.

Annals of Mathematics Studies, 147

Paper \$24.95 £15.95 ISBN 0-691-05076-7

Cloth \$69.50 £44.00 ISBN 0-691-05075-9

The Search for Mathematical Roots, 1870-1940

Logics, Set Theories and the Foundations of Mathematics from Cantor through Russell to Gödel

I. Grattan-Guinness

While many books have been written about Bertrand Russell's philosophy and some on his logic, I. Grattan-Guinness has written the first comprehensive history of the mathematical background, content, and impact of the mathematical logic and philosophy of mathematics that Russell developed with A. N. Whitehead in their *Principia mathematica* (1910-1913). This is a definitive history of a critical period in mathematics.

Paper \$39.50 £24.95 ISBN 0-691-05858-X

Cloth \$89.50 £56.00 ISBN 0-691-05857-1

Due December

New in paperback

From the Calculus to Set Theory 1630-1910

An Introductory History

Edited with an introduction by I. Grattan-Guinness

Paper \$24.95 £15.95 ISBN 0-691-07082-2

Due January



Princeton University Press

(1-243) 843294 U.K. • 800-777-4726 U.S. • WWW.PUP.PRINCETON.EDU

Cambridge ... for the books that count

25% off LMS books to LMS members

An Introduction to Rings and Modules

With K-Theory in View

A. J. Berrick and M. E. Keating

Ideal for a first year graduate student, and an excellent reference for working mathematicians in other areas.

£35.00 HB 0 521 63274 9 282pp 2000

Cambridge Studies in Advanced Mathematics, 65

Categories and Modules

With K-Theory in View

A. J. Berrick and M. E. Keating

This is a concise introduction at graduate level to category theory and module theory.

£35.00 HB 0 521 63276 5 380pp 2000

Cambridge Studies in Advanced Mathematics, 67

Introduction to the Analysis of Normed Linear Spaces

J. R. Giles

This is a basic course in functional analysis for senior undergraduate and beginning postgraduate students.

£19.95 PB 0 521 65375 4 294pp 2000

Australian Mathematical Society Lecture Series, 13

Polynomials with Special Regard to Reducibility

A. Schinzel

This unique book covers most of the known results on reducibility of polynomials over arbitrary fields, algebraically closed fields and finitely generated fields.

£60.00 HB 0 521 66225 7 568pp 2000

Encyclopedia of Mathematics and its Applications, 77

Probability Theory, an Analytic View

Daniel W. Stroock

'... uniformly well written and well spiced with comments to aid the intuition, so the readership should include a wide range, both of students and of professional probabilists.'

F. B. Knight, *Mathematical Reviews*

£18.95 PB 0 521 66349 0 552pp 2000

Computational and Geometric Aspects of Modern Algebra

M. D. Atkinson, N. D. Gilbert, J. Howie, S. A. Linton and E. F. Robertson

A collection of papers from leading researchers in the fields of word problems in algebra and geometric group theory.

£27.95 PB 0 521 78889 7 288pp 2000

London Mathematical Society Lecture Note Series, 275

Descriptive Set Theory and Dynamical Systems

Matthew Foreman, Alexander S. Kechris, Alain Louveau and Benjamin Weiss

Collection of survey papers providing an introduction for graduate students and researchers in these fields.

£27.95 PB 0 521 78644 4 300pp 2000

London Mathematical Society Lecture Note Series, 277

Cambridge books are available from good book-shops. Alternatively phone UK + 44 (0)1223 326050 to order direct using your credit card, or fax UK + 44 (0)1223 326111. For further information, please email science@cup.cam.ac.uk or browse at www.cambridge.org



CAMBRIDGE
UNIVERSITY PRESS

The Edinburgh Building, Cambridge, CB2 2RU, UK
www.cambridge.org

INSTITUT DES HAUTES ÉTUDES SCIENTIFIQUES

Each year the Institut des Hautes Études Scientifiques, located in Bures-sur-Yvette (France), welcomes 200 to 250 mathematicians and theoretical physicists from all over the world and for various periods (2 or 3 days up to 1 or 2 years).

Created in 1958, the IHÉS is a Private Foundation of international standing with the purpose of "favouring and developing theoretical research in Pure Mathematics, Theoretical Physics, Human Sciences Methodology and every other discipline which could be linked to those". The IHÉS is financed by the French Ministère de la Recherche et de la Technologie, some European research agencies such as the Engineering and Physical Sciences Research Council in the United Kingdom, the US National Science Foundation, the European Union, and several French and foreign foundations and companies. In February 2000, the European Commission acknowledged the IHÉS as a Large European Research Infrastructure centre.

Director: Jean-Pierre BOURGUIGNON

Permanent Professors: Thibault DAMOUR • Mikhael GROMOV
Maxim KONTSEVICH • Laurent LAFFORGUE • Nikita NEKRASSOV

Honorary Professors: David RUELLE • René THOM

Léon Motchane Chair: Alain CONNES

Louis Michel Chairs: Jürg FROHLICH • Michael DOUGLAS

Long term CNRS visitors: Ofer GABBER • Krzysztof GAWEDZKI • Christophe SOULÉ

External Members of the Scientific Committee:

Alain CONNES • Giovanni GALLAVOTTI • Hendrik LENSTRA • Peter SARNAK
Gabriele VENEZIANO • Jean-Bernard ZUBER

WILLIAM HODGE FELLOWSHIPS

The Engineering and Physical Sciences Research Council has now been supporting the IHÉS for a number of years and recently decided to foster closer links between British Institutions and French research centres of excellence. British mathematicians and theoretical physicists are invited to apply to the IHÉS to visit and additionally perhaps to use the opportunity to visit research groups in the Paris region. More information is given on the IHÉS website. In addition, the EPSRC and the IHÉS are offering annually two 1-year fellowships under the name of Sir William Hodge, the eminent British mathematician whose main interests were in algebraic and differential geometry. The fellowships will enable outstanding young mathematicians and theoretical physicists to spend time at the IHÉS.

Conditions for application PhD in Mathematics or Theoretical Physics obtained in 1998 or later. One of the two grants will be exclusively awarded to an applicant who has received his/her PhD from a UK University or has spent the last year in a UK university.

Selection of applicants Applications will be reviewed and selection made based only on the criterion of excellence by the IHÉS Scientific Committee on January 13, 2001. This Committee consists of the permanent professors, the Director, and some external members (names are listed above).

Starting date of the fellowships September or October 2001.

How to apply The application file should be sent under the name of "Hodge Fellowships" through the IHÉS website (www.ihes.fr) and should include: a motivation letter, a CV, a publication list, a research project and two or three letters of recommendation.

Deadline for applications: December 31, 2000.

Information IHÉS, 35 route de Chartres, F-91440 Bures-sur-Yvette (FRANCE)
tel: +33 1 6092 6600 • fax: +33 1 6092 6669 • e-mail: hodge@ihes.fr • website: www.ihes.fr

This holiday season, give the gift of mathematics.



Videos:

Outside In

ISBN 1-56881-052-0; (PAL) \$44, £37

The stunning computer animation in this award-winning video illustrates the discovery that a sphere can be turned inside out by means of smooth motion if self-intersection of the material is allowed.

N is a Number

ISBN 1-56881-094-6; (PAL) \$42, £33

A documentary filmed in four nations over a five-year period, this video presents Erdős's mathematical quest in its personal and philosophical dimensions, and the tragic historical events that molded his life.

Games:

Hex Strategy:

Making the Right Connections

Cameron Browne

ISBN 1-56881-117-9; Paperback;
384 pp; \$38.50, £27

The first comprehensive guide to the game of Hex and its mathematical underpinnings.

Popular:

Drawbridge Up: Mathematics—A Cultural Anathema

Hans Magnus Enzensberger

ISBN 1-56881-099-7; Paperback; 48 pp; \$5.00, £4

This bilingual edition (German/English) of the talk given at the International Congress of Mathematicians, Berlin, 1998, with illustrations by K. H. Hoffman and an introduction by David Mumford, discusses the role of mathematics in our culture.

Biographies:

The Education of a Mathematician

Philip J. Davis

ISBN 1-56881-116-0; Hardcover;
368 pp; \$29.95, £20

A thought-provoking mix of autobiography, history, and insights into the role of mathematics in everyday life, this highly entertaining book will appeal to all readers.

Politics, Logic, & Love

Anita Burdman Feferman

ISBN 1-56881-022-9; Hardcover;
432 pp; \$44.00, £30

This story of the logician Jean van Heijenoort, who also served as secretary and bodyguard to Leon Trotsky, captures the personal drama and the professional life of this important mathematician.

Logical Dilemmas

John Dawson

ISBN 1-56881-025-3; Hardcover;
376 pp; \$49.95, £34

This authoritative biography of Kurt Gödel relates the life of the eminent logician to the development of the field.



TO ORDER:
Plymbridge Distributors Limited
Estover Road, Plymouth PL6 7PZ
United Kingdom, Tel.+44-1752-202301



OR CONTACT: A K Peters, Ltd.,
63 South Ave, Natick, MA 01760
Tel: 508.655.9933 Fax: 508.655.5847
service@akpeters.com www.akpeters.com

BSHM CHRISTMAS MEETING 2000

The Christmas meeting of the British Society of the History of Mathematics will be held on Thursday 21 December 2000 at University College London. The following talks will be given:

- Professor Bernhard Neumann *An ancient mathematician remembers*
- Professor Robert Rankin *Hugh Blackburn: a little known mathematical colleague of Lord Kelvin*
- Dr Adrian Rice *G.H. Hardy, the London Mathematical Society, and the rise of British pure mathematical research in the first half of the 20th century*

All members of the London Mathematical Society and others, are very welcome. For further information about attending the meeting contact Chris Weeks (cjw6@tutor.open.ac.uk) or the BSHM website (<http://www.dcs.warwick.ac.uk/bshm/meetings.html>).

SEMINAIRE DE MATHEMATIQUES SUPERIEURES NATO Advanced Study Institute

A Seminar on Modern Methods in Scientific Computing and Applications will be held at the Université de Montréal, from 9-20 July 2001. Main speakers: Zh. Bai (UC at Davis), A. Bertozzi (Duke), A. Bourlioux (Montréal), G.H. Golub (Stanford), G. Haase (Linz), L. Halpern (Paris 13 /EP Paris), A.R. Humphries (Sussex), U. Langer (Linz), K. Mikula (TU Bratislava), F. Nataf (EP Paris), G. Papanicolaou (Stanford), J. Sethian (Berkeley), R. Sircar (Princeton), P. Souganidis (Texas at Austin), A.M. Stuart (Warwick), T. Witelski (Duke).

Partial financial support will be available. Priority will be given to graduate students. Requests for participation must be received before 28 February 2001. For further information contact G. David, Coordonator SMS, Departement de Mathematiques et de Statistique,

Université de Montréal, CP 6128/Centre-ville, Montréal (Qc), Canada H3C 3J7 (tel: (514) 343-6710, fax: (514) 343-5700, e-mail: sms@dms.umontreal.ca, web: www.dms.umontreal.ca/sms).

UNCERTAINTY IN GEOMETRIC COMPUTATIONS

Professor Mahesan Niranjan and Dr Joab Winkler of the Department of Computer Science at the University of Sheffield are arranging a MathFIT workshop 'The Representation and Management of Uncertainty in Geometric Computations', to be held in Sheffield during 4-6 July 2001. The workshop is supported by the Engineering and Physical Sciences Research Council (EPSRC) and the London Mathematical Society. It will be of interest to researchers in computer graphics, computer-aided geometric design and pattern recognition. We are particularly keen to attract computer scientists, mathematicians and engineers in order to foster new links for collaboration, thereby bringing new insights and methods to outstanding research issues. Please see <http://www.shef.ac.uk/~geom2001/> for more details, including an "indication of interest", and details of submission of a paper. Several studentships, supported by the EPSRC, are available to eligible UK students. Please contact the organisers for more details (m.niranjan@dcs.shef.ac.uk or j.winkler@dcs.shef.ac.uk).

EPSRC POSTDOCTORAL FELLOWSHIPS

The closing date for applying for EPSRC Postdoctoral Fellowships is 12 January 2000. Information can be found at www.epsrc.ac.uk/fellow

HONORARY DEGREE

Professor John Howie, FRSE, CBE, a member of the London Mathematical Society, was awarded an honorary degree (DUniv) by the Open University earlier this year.

Mathematics Institute University of Warwick

Symposium 2000/2001
September 2000 - August 2001

STOCHASTIC PARTIAL DIFFERENTIAL EQUATIONS & RELATED TOPICS

Organisers: David Elworthy, Andrew Stuart & Roger Tribe
Scientific Committee: Arnaud Debussche, Istvan Gyongy, Mark Freidlin & Nic Krylov
Leverhulme Visiting Professor: Jerzy Zabczyk

WORKSHOPS

- **19-24 March 2001** Discrete and Continuous Stochastic Evolutions
Including short courses by: R. Durrett, T. Kurtz
Organisers: David Elworthy & Roger Tribe
- **26-31 March 2001** Computational Stochastic Differential Equations
Invited Speakers include: A. Chorin, A. Debussche, A. Majda
Organiser: Andrew Stuart
- **2-6 April 2001** Lévy Processes
Organisers: David Applebaum, *et al.*
- **16-27 July 2001** Stochastic Partial Differential Equations
Organisers: David Elworthy, Andrew Stuart, Roger Tribe

MINI-SESSIONS

These sessions will have a learning element, with expository talks suitable for non-experts. Dates and venues should be confirmed - not all will be at Warwick.

- **10 & 11 November 2000** Functional Stochastic Differential Equations
Speakers include: S. Mohammed, X-R. Mao, B. Oksendal
- **17 & 18 November 2000** Schrödinger Equations with Random Forcing
- **1 & 2 December 2000** Ergodicity for Spatial Dynamics
- **19 & 20 January 2001** Stochastic Fluid Equations
- **2 & 3 February 2001** Homogenization
- **16 & 17 February 2001** Approximation Methods for SPDEs
- **9 & 10 March** SPDEs as Random Dynamical Systems
- **May/August 2001** Further sessions to be arranged; possible topics include:
SPDE in Mathematical Finance; Noisy Travelling Waves.

The Symposium is supported by the EPSRC and also by the LMS via the Warwick British Visitors fund which supports certain categories of UK visitors with especial encouragement to graduate students at UK Universities. There are also Marie Curie Fellowships which can enable EU graduate students to participate for a minimum period of 3 months.

For further information contact: Peta McAllister, Mathematics Research Centre, University of Warwick, Coventry CV4 7AL (tel: +44 (0)24 7652 4403; fax: +44 (0)24 7652 4182, e-mail: peta@maths.warwick.ac.uk, website: <http://www.maths.warwick.ac.uk/>).

OUN & AMS

A Partnership in Mathematics

LECTURES ON MATHEMATICS

FELIX KLEIN

AMS Chelsea Publications
SERIES OF MONOGRAPHS
IN MATHEMATICS

Lectures on Mathematics

Felix Klein

Klein's look at mathematics at the end of the 19th Century remains compelling today, both as history and as mathematics. It is delightful and fascinating to observe from a 100-year retrospect, the musings of one of the masters of an earlier era.

Chelsea Publications No. 339.H

2000, 109 pages, Hardback, 0-8218-2733-2, £11.50



Handbook of Logic in Computer Science

Volume 5: Algebraic and Logical Structures

Edited by S. Abramsky, Dov M. Gabbay, and T. S. E. Maibaum

Contents: Martin Lof's Type Theory; Categorical Logic; A Uniform Method for Proving Lower Bounds on the Computational complexity of Logical Theories; Algebraic specification of abstract data types; Computable Functions and Semicomputable Sets on Many-sorted Algebras.

2000, 528 pages, Hardback, 0-19-853781-6, £130.00

Notes on Seiberg-Witten Theory

Liviu I. Nicolaescu

AMS
SERIES OF MONOGRAPHS
IN MATHEMATICS



Notes on Seiberg-Witten Theory

Liviu. I. Nicolaescu

This book presents in great detail and with many examples, a basic collection of principles, techniques, and applications needed to conduct independent research in gauge theory and its use in geometry and topology.

Graduate Studies in Mathematics No. 28

January 2001, 448 pages, Hardback, 0-8218-2145-8, £36.00



Mathematical Logic: A course with exercises

Part 1: Propositional Calculus, Boolean Algebras, Predicate Calculus, Completeness Theorems

Rene Cori and Daniel Lascar. Translated by Donald Pelletier

This book provides students with a clear and accessible introduction to this important subject. The concept of model underlies the whole book, giving the text a theoretical coherence whilst still covering a wide area of logic.

2000, 352 pages, Hardback, 0-19-850049-1, £60.00

OXFORD
UNIVERSITY PRESS

www.oup.co.uk

TO ORDER DIRECT BY CREDIT CARD, CALL EITHER OF THE NUMBERS BELOW
AND HAVE YOUR DETAILS WITH YOU WHEN YOU DIAL:

Tel: +44 (0) 1536 454534 or Fax: +44 (0) 1536 454418

PLEASE QUOTE THE CODE
LMSAD1100

THE INSTITUTE OF MATHEMATICS AND ITS APPLICATIONS



FORTHCOMING CONFERENCES

Assessing Credit Risk in Retail Financial Services

Bank of England, 14 November 2000

Millennium Event in Conjunction with World Mathematics Year

University College London, 28 November 2000

Fifth Mathematics in Signal Processing

University of Warwick, 18 - 20 December 2000

Third Spatial Patterns in Permeable Rocks

Churchill College, Cambridge, 27 - 29 March 2001

Fourth Modelling in Industrial Maintenance and Reliability

University of Salford, 9-11 April 2001

Second Wind-Over-Waves: Fundamentals, Forecasting and Applications

Cambridge, 3-5 September 2001

ECCOMAS 2001: Computational Fluid Dynamics

Swansea, 4 - 7 September 2001

Mathematical Modelling and Statistical Analysis of Infectious Diseases

Cardiff University, 11-13 September 2001

Advanced Simulation and Control for Automotive Applications

Keble College, Oxford, 24 - 26 September 2001

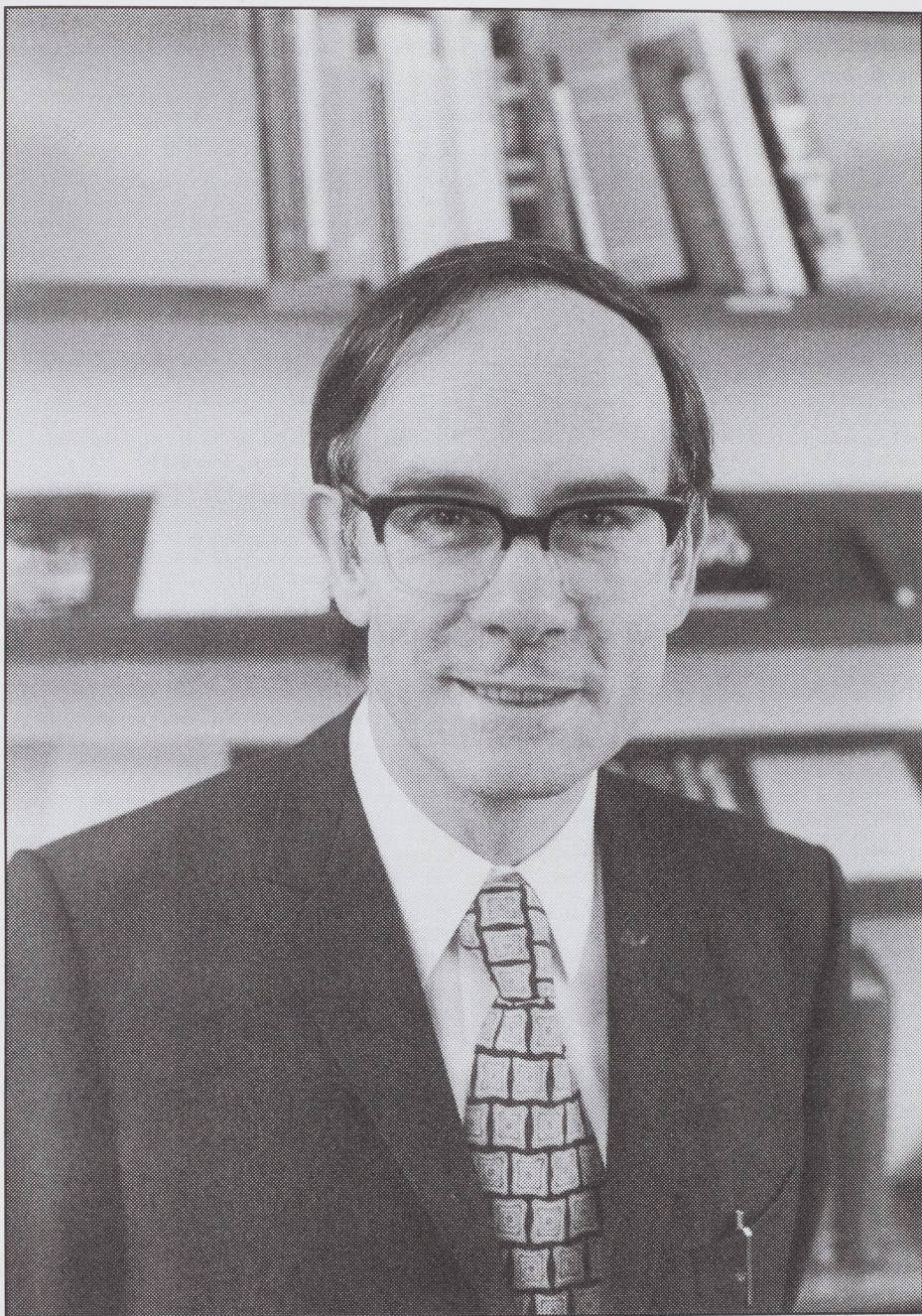
Eighth Cryptography and Coding

Royal Agricultural College, Cirencester, 17-19 December 2001

Further details from: Pamela Bye, Conference Officer, The Institute of Mathematics and its Applications, Catherine Richards House, 16 Nelson Street, Southend-on-Sea, Essex SS1 1EF.

Tel: (01702) 354020
E-mail: conferences@ima.org.uk

Fax: (01702) 354111
Web: www.ima.org.uk



F. HIRZEBRUCH
HONORARY MEMBER 1975

DIARY

The diary lists Society meetings and other events publicized in the *Newsletter*. Further information can be obtained from the appropriate LMS Newsletter whose number is given in brackets. A fuller list of meetings and events is given in the Society's web site (<http://www.lms.ac.uk/meetings/diary.html>).

NOVEMBER 2000

- 3-4 North British Functional Analysis Seminar, Glasgow University (286)
- 6 Nonlinear Mechanics Meeting, Bath University (287)
- 10-11 Stochastic Functional Differential Equations Mini Workshop, Warwick University (286)
- 15-16 Topological Methods in the Physical Sciences Discussion Meeting, Royal Society London (285)
- 17 Edinburgh Mathematical Society Meeting, Strathclyde University (285)
- 18 Belfast Functional Analysis Day 2000, Queen's University Belfast (285)
- 18-22 Mathematics for Living Conference, Jordan (280)
- 20 Differential Geometry in Fluid Dynamics and Dynamical Systems, BRIMS Day, Isaac Newton Institute, Cambridge (282) (285)
- 24 London Mathematical Society AGM and Meeting, London (287)
- 29 Yorkshire Differential Geometry Day, York University (287)

DECEMBER 2000

- 15 Edinburgh Mathematical Society Meeting, Napier University (285)
- 16-21 Applications of Singularity Theory to Geometry Conference, Liverpool University (283)
- 18-20 Mathematics in Signal Processing, Warwick University (279)
- 18-20 Lie Groups Conference, Twente University, The Netherlands (287)
- 21 BSHM Christmas Meeting, University College London (287)

JANUARY 2001

- 8-12 Wave Motion LMS/EPSRC Short Course, Birmingham University (285) (286)
- 8-18 Nonlinear Partial Differential Equations ICMS Instructional Conference, ICMS Edinburgh (284)
- 10 British Women in Mathematics Meeting, London (287)
- 12 Edinburgh Mathematical Society Meeting, Edinburgh University (285)

FEBRUARY 2001

- 9 Edinburgh Mathematical Society Meeting, Edinburgh University (285)
- 10 Mary Cartwright Lecture, LMS Meeting, Oxford (287)
- 28 Inaugural LMS Regional Meeting (Midlands), Birmingham

MARCH 2001

- 9 Edinburgh Mathematical Society Meeting, Aberdeen University (285)
- 18-24 Geometric Analysis and Index Theory Conference, Trieste, Italy (286)
- 19-24 Discrete and Continuous Stochastic Evolutions Workshop, Warwick University (287)
- 26-29 Quantum Field Theory, Noncommutative Geometry and Quantum Probability Workshop, Trieste, Italy (286)
- 26-29 Numerical Methods for Fluid Dynamics Conference, Oxford University (286)

- 26-31 Computational Stochastic Differential Equations Workshop, Warwick University (287)

APRIL 2001

- 2-5 British Applied Mathematics Colloquium, Reading University
- 2-6 Lévy Processes and Stable Law Conference, Warwick University (287)
- 7-9 British Topology Meeting, Edinburgh and Heriot-Watt Universities (286)
- 9-12 British Mathematical Colloquium, Glasgow University (287)

MAY 2001

- 4 Edinburgh Mathematical Society Meeting, Stirling University (285)
- 6-13 Symmetry and Perturbation Theory Workshop (SPT2001), Sardinia (284)

- 28-1 June Harmonic Morphisms and Harmonic Maps Conference, CIRM, Luminy, France (284)

JUNE 2001

- 1 Edinburgh Mathematical Society Meeting, St Andrews University (285)
- 8-10 Belgian Mathematical Society/Deutsche Mathematiker Vereinigung joint meeting, Liège University, Belgium (284)
- 19-22 Computational Intelligence: Methods and Applications Congress (CIMA 2001) University of Wales, Bangor (283)
- 19-23 Calculus of Functors, T. Goodwillie, LMS Invited Lectures, Aberdeen University (286)

JULY 2001

- 1-6 British Combinatorial Conference, Sussex University (276)
- 4-6 Uncertainty in Geometric Computations MathFIT Workshop, Sheffield University (287)
- 5-7 British Congress of Mathematics Education, Keele University (286)
- 9-13 Stochastic Processes and their Applications Conference, Cambridge (275)
- 9-20 Modern Methods in Scientific Computing and Applications Seminar, Université de Montréal, Canada (287)
- 15-20 Algorithms for Approximation IV Symposium, Huddersfield University (286)
- 16-27 Stochastic Partial Differential Equations Workshop, Warwick University (287)
- 29-2 Aug Teaching of Mathematical Modelling and Applications (ICTMA 10), Tsinghua University, China (284)

AUGUST 2001

- 12-19 Homological Conjectures for Finite-Dimensional Algebras Summer School, Nordfjordeid, Norway (275)

APRIL 2002

- 7-12 Joint BMC/BAMC, Warwick University

AUGUST 2002

- 20-28 ICM2002, Beijing, China (272)

The Newsletter is published monthly except in August. Items and advertisements for inclusion in the Newsletter should be sent to the Editor, Susan Oakes, by e-mail, fax or post to the LMS office (addresses below), to arrive before the first day of the month prior to publication.

The London Mathematical Society, De Morgan House, 57-58 Russell Square, London WC1B 4HS

Tel: 020 7291 9977 fax: 020 7323 3655, e-mail: lms@lms.ac.uk.

World Wide Web: <http://www.lms.ac.uk/>

The London Mathematical Society is registered with the Charity Commissioners.