

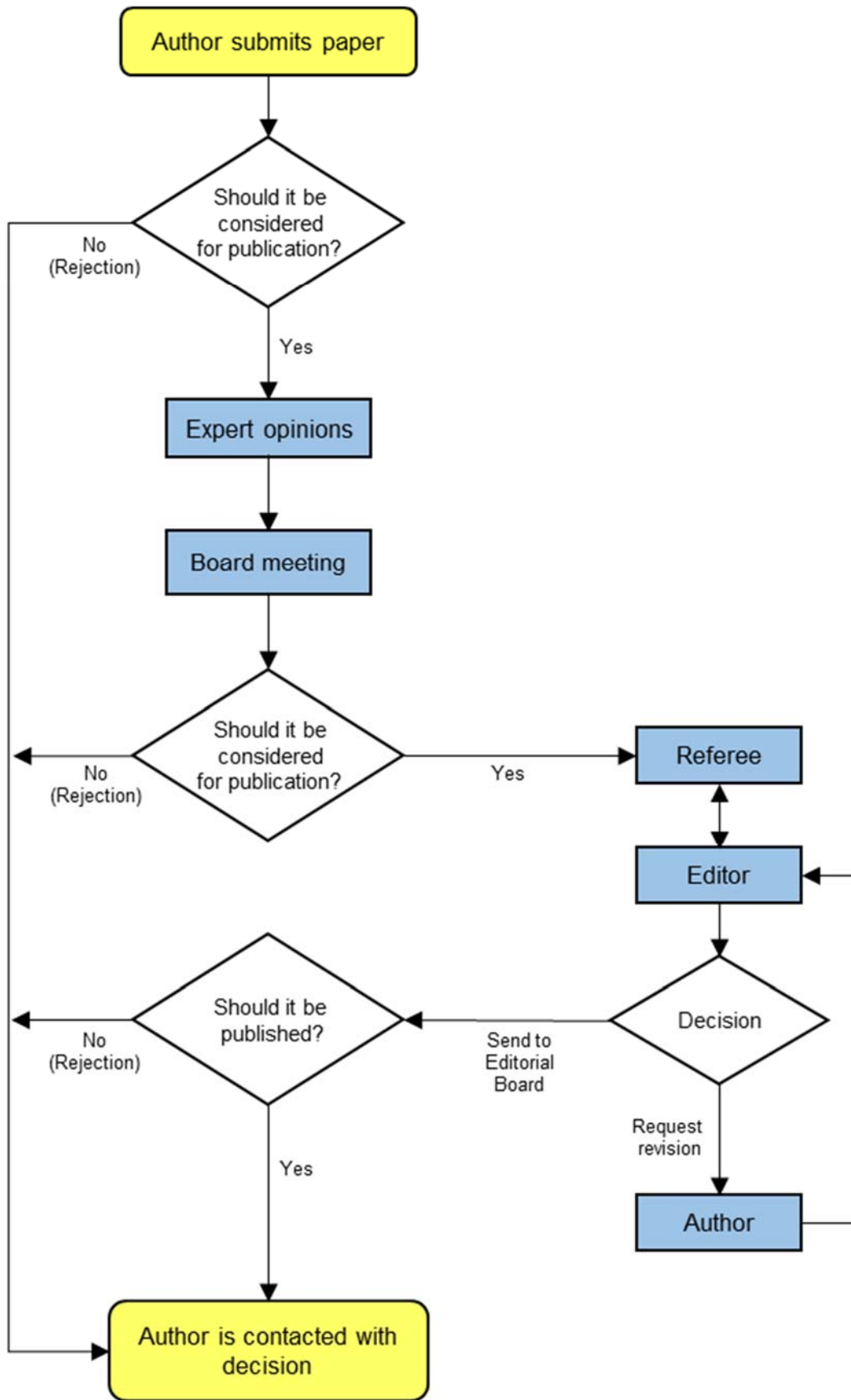
## Overview of Review Process

This guide provides an overview of the review process for papers submitted to the *Proceedings* of the London Mathematical Society (LMS). This journal uses single-blind peer review, in which the names of the referees are not known to the author.

- 1) Submissions are initially assessed by an Editor, who determines whether the paper is suitable for further consideration by the journal.
- 2) Papers may be rejected early in the review process by the Editor, if they are judged to be unsuitable.
- 3) If the paper passes the initial assessment against the journal's criteria, then it will be sent to multiple experts in the subject field, who will advise the Editor whether the paper is perceived to meet the mathematical and editorial standards of the *Proceedings*.
- 4) If, based on this advice, the Editorial Board decides that the paper merits serious consideration, the paper is informally accepted and the Editor will seek a referee, who will provide an in-depth report about the paper.\*
- 5) Once the Editor receives the referee report, it will be forwarded to the author, who should make the relevant changes and then upload their revised paper.
- 6) Following this, the Editor will make a recommendation to the Editorial Board, who will agree whether the paper should be accepted, revised further, or rejected.
- 7) The agreed decision is then communicated to the authors.

\* Please note that if the referee's report is not positive, or it turns up a major problem with the paper, then the paper will be rejected.

The process is illustrated in the following flow chart:



## Experts and Referees

It should be noted that, whilst the Editors aim to review papers with minimum delay, it can take time to find experts who are both able and willing to review papers. Once a referee is secured, waiting times can vary depending on the length of the paper and the subject area.

As the LMS's referees are volunteers, there is a limit on the pressure that can be brought to bear by Editors on referees who are unable to return their reports within the agreed time period.

## Withdrawals

On rare occasions, Editors are unable to find suitable referees, or are unable to obtain a report from a referee long after the agreed deadline has passed. Both scenarios can lead to long delays, which are unacceptable to authors and Editors alike. In such circumstances, as a last resort, the Editor may offer the author the option to withdraw the paper and submit it elsewhere, and authors maintain the right to withdraw the current version of their article at any time during the review process.

## Additional Information

### Privacy Policy

When submitting a paper, an author will have agreed to allow the LMS to store their personal data and will have been informed of the LMS's data protection policy. Under UK law, the LMS is required to explain how author personal data stored on its system will be subsequently used.

The LMS submission portal privacy policy can be found here:

<http://edf.lms.ac.uk/ef/docs/DPA.html>

### Ethical Policy

Any paper found to be submitted to and still under consideration by another journal, or published elsewhere will be rejected automatically, and may prejudice acceptance of future submissions.

If asked to revise a paper, any author who has submitted a co-authored paper should ensure that all authors have read and approved any revision before a new version of a paper is uploaded.

The full ethical policy can be found at:

<https://www.lms.ac.uk/sites/lms.ac.uk/files/Publications/EthicalPolicy.pdf>

## Contact LMS

If you have any queries about the information in this guide, please contact [lmsjournals@lms.ac.uk](mailto:lmsjournals@lms.ac.uk) and cite the Journal Name and your paper ID.